

Product datasheet for **TA338299**

DSN1 Rabbit Polyclonal Antibody

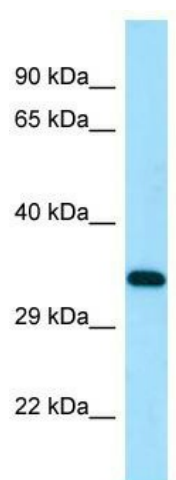
Product data:

| | |
|-------------------------|---|
| Product Type: | Primary Antibodies |
| Applications: | WB |
| Recommended Dilution: | WB |
| Reactivity: | Human |
| Host: | Rabbit |
| Isotype: | IgG |
| Clonality: | Polyclonal |
| Immunogen: | The immunogen for anti-DSN1 antibody is: synthetic peptide directed towards the N-terminal region of Human DSN1. Synthetic peptide located within the following region: SKSLHLSPQEQSASYQDRRQSWRRASMKETNRRKSLHPIHQGITELSRSI |
| Formulation: | Liquid. Purified antibody supplied in 1x PBS buffer with 0.09% (w/v) sodium azide and 2% sucrose. <i>Note that this product is shipped as lyophilized powder to China customers.</i> |
| Purification: | Affinity Purified |
| Conjugation: | Unconjugated |
| Storage: | Store at -20°C as received. |
| Stability: | Stable for 12 months from date of receipt. |
| Predicted Protein Size: | 38 kDa |
| Gene Name: | DSN1 homolog, MIS12 kinetochore complex component |
| Database Link: | NP_001138790 Entrez Gene 79980 Human Q9H410 |
| Background: | This gene encodes a kinetochore protein that functions as part of the minichromosome instability-12 centromere complex. The encoded protein is required for proper kinetochore assembly and progression through the cell cycle. Alternative splicing results in multiple transcript variants. |
| Synonyms: | C20orf172; dj469A13.2; hKNL-3; KNL3; MIS13 |
| Note: | Immunogen Sequence Homology: Human: 100%; Pig: 86%; Horse: 86%; Rat: 79% |



[View online »](#)

Product images:



WB Suggested Anti-DSN1 Antibody; Titration: 1.0 ug/ml; Positive Control: HepG2 Whole Cell