

Product datasheet for **TA338298**

GPSM1 Rabbit Polyclonal Antibody

Product data:

Product Type:	Primary Antibodies
Applications:	WB
Recommended Dilution:	WB
Reactivity:	Human
Host:	Rabbit
Isotype:	IgG
Clonality:	Polyclonal
Immunogen:	The immunogen for anti-GPSM1 antibody is: synthetic peptide directed towards the C-terminal region of Human GPSM1. Synthetic peptide located within the following region: DSLPLPVRSRKYQEGPDAERRPREGSHSPLDSADVRVHVPRTSIPRAPSS
Formulation:	Liquid. Purified antibody supplied in 1x PBS buffer with 0.09% (w/v) sodium azide and 2% sucrose. <i>Note that this product is shipped as lyophilized powder to China customers.</i>
Purification:	Affinity Purified
Conjugation:	Unconjugated
Storage:	Store at -20°C as received.
Stability:	Stable for 12 months from date of receipt.
Predicted Protein Size:	74 kDa
Gene Name:	G-protein signaling modulator 1
Database Link:	NP_001139110 Entrez Gene 26086 Human Q86YR5
Background:	G-protein signaling modulators (GPSMs) play diverse functional roles through their interaction with G-protein subunits. This gene encodes a receptor-independent activator of G protein signaling, which is one of several factors that influence the basal activity of G-protein signaling systems. The protein contains seven tetratricopeptide repeats in its N-terminal half and four G-protein regulatory (GPR) motifs in its C-terminal half. Multiple alternatively spliced transcript variants encoding different isoforms have been found for this gene.

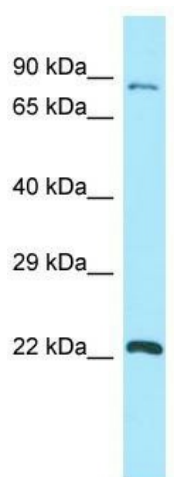


[View online »](#)

Synonyms: AGS3

Note: Immunogen Sequence Homology: Human: 100%; Rat: 93%; Mouse: 93%; Bovine: 93%; Dog: 79%

Product images:



WB Suggested Anti-GPSM1 Antibody; Titration: 1.0 ug/ml; Positive Control: NCI-H226 Whole Cell