

## Product datasheet for **TA338297**

### LIMS2 Rabbit Polyclonal Antibody

#### Product data:

Product Type:	Primary Antibodies
Applications:	WB
Recommended Dilution:	WB
Reactivity:	Human
Host:	Rabbit
Isotype:	IgG
Clonality:	Polyclonal
Immunogen:	The immunogen for anti-LIMS2 antibody is: synthetic peptide directed towards the N-terminal region of Human LIMS2. Synthetic peptide located within the following region: DVELADLGFVKNAGRHLCRPCHNREKAKGLGKYICQRCHLVIDEQLMFR
Formulation:	Liquid. Purified antibody supplied in 1x PBS buffer with 0.09% (w/v) sodium azide and 2% sucrose. <i>Note that this product is shipped as lyophilized powder to China customers.</i>
Purification:	Affinity Purified
Conjugation:	Unconjugated
Storage:	Store at -20°C as received.
Stability:	Stable for 12 months from date of receipt.
Predicted Protein Size:	38 kDa
Gene Name:	LIM zinc finger domain containing 2
Database Link:	<a href="#">NP_001154876</a> <a href="#">Entrez Gene 55679 Human</a> <a href="#">Q7Z4I7</a>
Background:	This gene encodes a member of a small family of focal adhesion proteins which interacts with ILK (integrin-linked kinase), a protein which effects protein-protein interactions with the extracellular matrix. The encoded protein has five LIM domains, each domain forming two zinc fingers, which permit interactions which regulate cell shape and migration. A pseudogene of this gene is located on chromosome 4. Multiple transcript variants encoding different isoforms have been found for this gene.

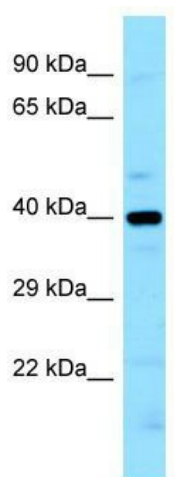


[View online »](#)

**Synonyms:** LGMD2W; PINCH-2; PINCH2

**Note:** Immunogen Sequence Homology: Dog: 100%; Pig: 100%; Rat: 100%; Horse: 100%; Human: 100%; Mouse: 100%; Bovine: 100%; Rabbit: 100%; Zebrafish: 93%; Guinea pig: 93%; Goat: 86%

**Product images:**



WB Suggested Anti-LIMS2 Antibody; Titration: 1.0 ug/ml; Positive Control: MCF7 Whole Cell