

Product datasheet for **TA338296**

ALDH4A1 Rabbit Polyclonal Antibody

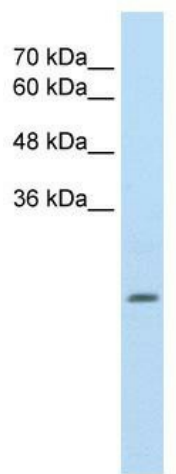
Product data:

| | |
|-------------------------|---|
| Product Type: | Primary Antibodies |
| Applications: | IHC, WB |
| Recommended Dilution: | WB, IHC |
| Reactivity: | Human |
| Host: | Rabbit |
| Isotype: | IgG |
| Clonality: | Polyclonal |
| Immunogen: | The immunogen for anti-ALDH4A1 antibody: synthetic peptide directed towards the N terminal of human ALDH4A1. Synthetic peptide located within the following region: QGKTVIQAEIDAAELIDFFRFNAKYAVELEGQQPISVPPSTNSTVYRGL |
| Formulation: | Liquid. Purified antibody supplied in 1x PBS buffer with 0.09% (w/v) sodium azide and 2% sucrose. <i>Note that this product is shipped as lyophilized powder to China customers.</i> |
| Purification: | Protein A purified |
| Conjugation: | Unconjugated |
| Storage: | Store at -20°C as received. |
| Stability: | Stable for 12 months from date of receipt. |
| Predicted Protein Size: | 24 kDa |
| Gene Name: | aldehyde dehydrogenase 4 family member A1 |
| Database Link: | NP_001154976 Entrez Gene 8659 Human P30038 |

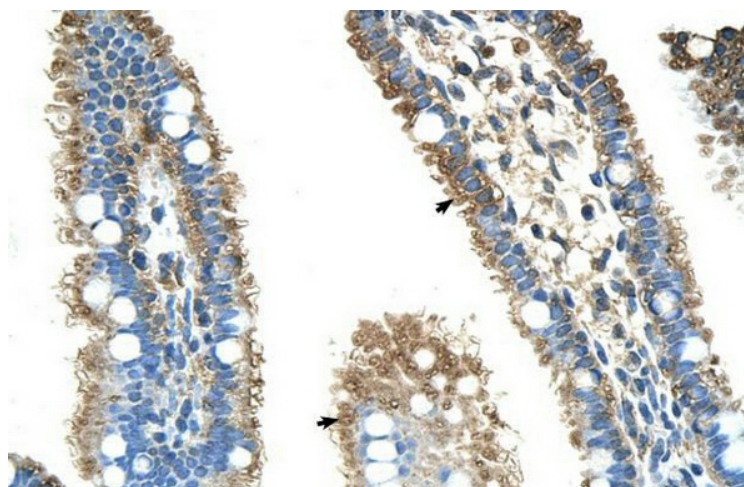


[View online »](#)

| | |
|--------------------------|--|
| Background: | This protein belongs to the aldehyde dehydrogenase family of proteins. This enzyme is a mitochondrial matrix NAD-dependent dehydrogenase which catalyzes the second step of the proline degradation pathway, converting pyrroline-5-carboxylate to glutamate. Deficiency of this enzyme is associated with type II hyperprolinemia, an autosomal recessive disorder characterized by accumulation of delta-1-pyrroline-5-carboxylate (P5C) and proline. Alternatively spliced transcript variants encoding different isoforms have been identified for this gene. [provided by RefSeq, Jun 2009] |
| Synonyms: | ALDH4; P5CD; P5CDh |
| Note: | Immunogen Sequence Homology: Pig: 100%; Horse: 100%; Human: 100%; Dog: 93%; Rat: 92%; Mouse: 92%; Rabbit: 92%; Bovine: 86%; Guinea pig: 85% |
| Protein Families: | Druggable Genome |
| Protein Pathways: | Alanine, aspartate and glutamate metabolism, Arginine and proline metabolism, Metabolic pathways |

Product images:

WB Suggested Anti-ALDH4A1 Antibody Titration: 2.5 ug/ml; Positive Control: HepG2 cell lysate. ALDH4A1 is strongly supported by BioGPS gene expression data to be expressed in Human HepG2 cells



Human Intestine