

## Product datasheet for **TA338294**

### PLXNB3 Rabbit Polyclonal Antibody

#### Product data:

Product Type:	Primary Antibodies
Applications:	WB
Recommended Dilution:	WB
Reactivity:	Human
Host:	Rabbit
Isotype:	IgG
Clonality:	Polyclonal
Immunogen:	The immunogen for anti-PLXNB3 antibody is: synthetic peptide directed towards the C-terminal region of Human PLXNB3. Synthetic peptide located within the following region: DYRTYAERAFFPGHGGCPLQPKPEGPGEDGHCATVRQGLTQLSNLLNSKL
Formulation:	Liquid. Purified antibody supplied in 1x PBS buffer with 0.09% (w/v) sodium azide and 2% sucrose. <i>Note that this product is shipped as lyophilized powder to China customers.</i>
Purification:	Affinity Purified
Conjugation:	Unconjugated
Storage:	Store at -20°C as received.
Stability:	Stable for 12 months from date of receipt.
Predicted Protein Size:	171 kDa
Gene Name:	plexin B3
Database Link:	<a href="#">NP_001156729</a> <a href="#">Entrez Gene 5365 Human</a> <a href="#">Q9ULL4</a>
Background:	The protein encoded by this gene is a member of the plexin family. It functions as a receptor for semaphorin 5A, and plays a role in axon guidance, invasive growth and cell migration. Alternatively spliced transcript variants encoding different isoforms have been found for this gene.
Synonyms:	PLEXB3; PLEXR; PLXN6
Note:	Immunogen Sequence Homology: Human: 100%; Pig: 83%; Guinea pig: 83%

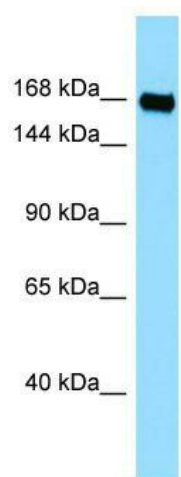


[View online »](#)

Protein Families: Druggable Genome

Protein Pathways: Axon guidance

### Product images:



WB Suggested Anti-PLXNB3 Antibody; Titration:  
1.0 ug/ml; Positive Control: Jurkat Whole Cell