

Product datasheet for **TA338293**

Tmprss3 Rabbit Polyclonal Antibody

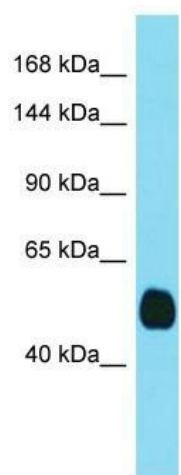
Product data:

Product Type:	Primary Antibodies
Applications:	WB
Recommended Dilution:	WB
Reactivity:	Mouse
Host:	Rabbit
Isotype:	IgG
Clonality:	Polyclonal
Immunogen:	The immunogen for anti-Tmprss3 antibody is: synthetic peptide directed towards the C-terminal region of Mouse Tmprss3. Synthetic peptide located within the following region: ISPSMLCAGYLKGGVDSCQGDSGGPLVCQERRLWKLVGATSGIGCAEVN
Formulation:	Liquid. Purified antibody supplied in 1x PBS buffer with 0.09% (w/v) sodium azide and 2% sucrose. <i>Note that this product is shipped as lyophilized powder to China customers.</i>
Purification:	Affinity Purified
Conjugation:	Unconjugated
Storage:	Store at -20°C as received.
Stability:	Stable for 12 months from date of receipt.
Predicted Protein Size:	52 kDa
Gene Name:	transmembrane protease, serine 3
Database Link:	NP_001157248 Entrez Gene 140765 Mouse Q8K1T0
Background:	The function of this protein remains unknown.
Synonyms:	DFNB8; DFNB10; ECHOS1; TADG12
Note:	Immunogen Sequence Homology: Dog: 100%; Pig: 100%; Rat: 100%; Horse: 100%; Human: 100%; Mouse: 100%; Bovine: 100%; Zebrafish: 100%; Guinea pig: 100%; Rabbit: 93%



[View online »](#)

Product images:



Host: Rabbit; Target Name: Tmprss3; Sample
Tissue: Mouse Kidney lysates; Antibody Dilution:
1.0 ug/ml