

Product datasheet for **TA338292**

RAGEF2 (RAPGEF6) Rabbit Polyclonal Antibody

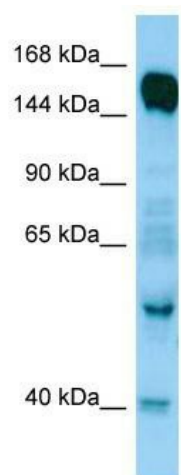
Product data:

Product Type:	Primary Antibodies
Applications:	WB
Recommended Dilution:	WB
Reactivity:	Human
Host:	Rabbit
Isotype:	IgG
Clonality:	Polyclonal
Immunogen:	The immunogen for anti-RAPGEF6 antibody is: synthetic peptide directed towards the N-terminal region of Human RAPGEF6. Synthetic peptide located within the following region: GSMVLPPCSFGKQFGGKRGCDCLVLEPSEMIVVENAKDNEDSILQREIPA
Formulation:	Liquid. Purified antibody supplied in 1x PBS buffer with 0.09% (w/v) sodium azide and 2% sucrose. <i>Note that this product is shipped as lyophilized powder to China customers.</i>
Purification:	Affinity Purified
Conjugation:	Unconjugated
Storage:	Store at -20°C as received.
Stability:	Stable for 12 months from date of receipt.
Predicted Protein Size:	157 kDa
Gene Name:	Rap guanine nucleotide exchange factor 6
Database Link:	NP_001157861 Entrez Gene 51735 Human Q8TEU7
Background:	RAPGEF6 is a guanine nucleotide exchange factor (GEF) for Rap1A, Rap2A and M-Ras GTPases. RAPGEF6 does not interact with cAMP.
Synonyms:	KIA001LB; PDZ-GEF2; PDZGEF2; RA-GEF-2; RAGEF2
Note:	Immunogen Sequence Homology: Human: 100%; Dog: 93%; Rat: 93%; Mouse: 93%; Pig: 86%; Bovine: 86%; Rabbit: 86%; Guinea pig: 86%



[View online »](#)

Product images:



WB Suggested Anti-RAPGEF6 Antibody; Titration:
1.0 ug/ml; Positive Control: Fetal Brain