

Product datasheet for **TA338291**

HPSE2 Rabbit Polyclonal Antibody

Product data:

Product Type:	Primary Antibodies
Applications:	WB
Recommended Dilution:	WB
Reactivity:	Human
Host:	Rabbit
Isotype:	IgG
Clonality:	Polyclonal
Immunogen:	The immunogen for anti-HPSE2 antibody is: synthetic peptide directed towards the N-terminal region of Human HPSE2. Synthetic peptide located within the following region: SPAFLRFGGKRTDFLQFQNLRNPAKSRGGPGPDYYLKNYEDEPNNYRTMH
Formulation:	Liquid. Purified antibody supplied in 1x PBS buffer with 0.09% (w/v) sodium azide and 2% sucrose. <i>Note that this product is shipped as lyophilized powder to China customers.</i>
Purification:	Affinity Purified
Conjugation:	Unconjugated
Storage:	Store at -20°C as received.
Stability:	Stable for 12 months from date of receipt.
Predicted Protein Size:	54 kDa
Gene Name:	heparanase 2 (inactive)
Database Link:	NP_001159717 Entrez Gene 60495 Human Q8WWQ2
Background:	This gene encodes a heparanase enzyme. The encoded protein is an endoglycosidase that degrades heparin sulfate proteoglycans located on the extracellular matrix and cell surface. This protein may be involved in biological processes involving remodeling of the extracellular matrix including angiogenesis and tumor progression. Alternate splicing results in multiple transcript variants.
Synonyms:	HPA2; HPR2; UFS; UFS1

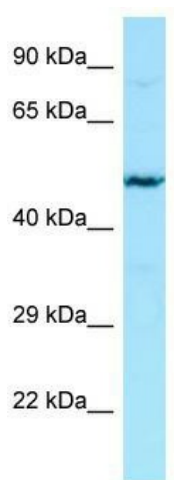


[View online »](#)

Note: Immunogen Sequence Homology: Dog: 100%; Human: 100%; Mouse: 100%

Protein Pathways: Glycosaminoglycan degradation, Metabolic pathways

Product images:



WB Suggested Anti-HPSE2 Antibody; Titration: 1.0 ug/ml; Positive Control: Jurkat Whole Cell