

## Product datasheet for **TA338288**

### Importin 8 (IPO8) Rabbit Polyclonal Antibody

#### Product data:

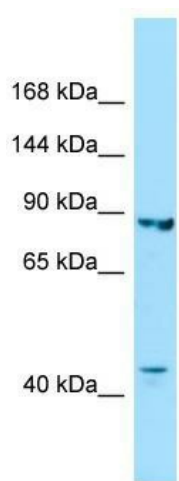
Product Type:	Primary Antibodies
Applications:	WB
Recommended Dilution:	WB
Reactivity:	Human
Host:	Rabbit
Isotype:	IgG
Clonality:	Polyclonal
Immunogen:	The immunogen for anti-IPO8 antibody is: synthetic peptide directed towards the C-terminal region of Human IPO8. Synthetic peptide located within the following region: PPAVDAVVGQIVPSILFLFLGLKQVCATRQLVNREDRSKAEKADMEENEE
Formulation:	Liquid. Purified antibody supplied in 1x PBS buffer with 0.09% (w/v) sodium azide and 2% sucrose.
Purification:	Affinity Purified
Conjugation:	Unconjugated
Storage:	Store at -20°C as received.
Stability:	Stable for 12 months from date of receipt.
Predicted Protein Size:	96 kDa
Gene Name:	importin 8
Database Link:	<a href="#">NP_001177924</a> <a href="#">Entrez Gene 10526 Human</a> <a href="#">O15397</a>
Background:	The importin-alpha/beta complex and the GTPase Ran mediate nuclear import of proteins with a classical nuclear localization signal. The protein encoded by this gene is a member of a class of approximately 20 potential Ran targets that share a sequence motif related to the Ran-binding site of importin-beta. This protein binds to the nuclear pore complex and, along with RanGTP and RANBP1, inhibits the GAP stimulation of the Ran GTPase. Alternatively spliced transcript variants encoding different isoforms have been found for this gene.
Synonyms:	RANBP8



[View online »](#)

**Note:** Immunogen Sequence Homology: Dog: 100%; Horse: 100%; Human: 100%; Pig: 93%; Rat: 93%; Guinea pig: 93%

### Product images:



WB Suggested Anti-IPO8 Antibody; Titration: 1.0 ug/ml; Positive Control: Fetal Kidney