

Product datasheet for **TA338287**

GPR35 Rabbit Polyclonal Antibody

Product data:

| | |
|-------------------------|--|
| Product Type: | Primary Antibodies |
| Applications: | WB |
| Recommended Dilution: | WB |
| Reactivity: | Human |
| Host: | Rabbit |
| Isotype: | IgG |
| Clonality: | Polyclonal |
| Immunogen: | The immunogen for anti-GPR35 antibody is: synthetic peptide directed towards the C-terminal region of Human GPR35. Synthetic peptide located within the following region: HNFNSMAFPLLGFYLP LAVVVFCSLKVVTAL AQR PPTDVGQAEATRKAAR |
| Formulation: | Liquid. Purified antibody supplied in 1x PBS buffer with 0.09% (w/v) sodium azide and 2% sucrose. <i>Note that this product is shipped as lyophilized powder to China customers.</i> |
| Purification: | Affinity Purified |
| Conjugation: | Unconjugated |
| Storage: | Store at -20°C as received. |
| Stability: | Stable for 12 months from date of receipt. |
| Predicted Protein Size: | 37 kDa |
| Gene Name: | G protein-coupled receptor 35 |
| Database Link: | NP_001182310 Entrez Gene 2859 Human Q9HC97 |
| Background: | GPR35 acts as a receptor for kynurenic acid, an intermediate in the tryptophan metabolic pathway. The activity of this receptor is mediated by G-proteins that elicit calcium mobilization and inositol phosphate production through G(qi/o) proteins. |
| Synonyms: | KPG_007 |
| Note: | Immunogen Sequence Homology: Human: 100%; Rat: 79%; Mouse: 79% |

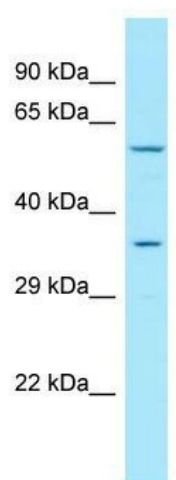


[View online »](#)

Protein Families: Druggable Genome, GPCR, Transmembrane

Protein Pathways: Neuroactive ligand-receptor interaction

Product images:



WB Suggested Anti-GPR35 Antibody; Titration: 1.0 ug/ml; Positive Control: HT1080 Whole Cell