

Product datasheet for **TA338286**

GPR35 Rabbit Polyclonal Antibody

Product data:

Product Type:	Primary Antibodies
Applications:	WB
Recommended Dilution:	WB
Reactivity:	Human
Host:	Rabbit
Isotype:	IgG
Clonality:	Polyclonal
Immunogen:	The immunogen for anti-GPR35 antibody is: synthetic peptide directed towards the C-terminal region of Human GPR35. Synthetic peptide located within the following region: YITSKLSDANCCCLDAICYYYMAKEFQEASALAVAPSAKAHKSQDSL CVTL
Formulation:	Liquid. Purified antibody supplied in 1x PBS buffer with 0.09% (w/v) sodium azide and 2% sucrose. <i>Note that this product is shipped as lyophilized powder to China customers.</i>
Purification:	Affinity Purified
Conjugation:	Unconjugated
Storage:	Store at -20°C as received.
Stability:	Stable for 12 months from date of receipt.
Predicted Protein Size:	37 kDa
Gene Name:	G protein-coupled receptor 35
Database Link:	NP_001182310 Entrez Gene 2859 Human Q9HC97
Background:	GPR35 acts as a receptor for kynurenic acid, an intermediate in the tryptophan metabolic pathway. The activity of this receptor is mediated by G-proteins that elicit calcium mobilization and inositol phosphate production through G(qi/o) proteins.
Synonyms:	KPG_007
Note:	Immunogen Sequence Homology: Human: 100%; Horse: 85%; Dog: 77%

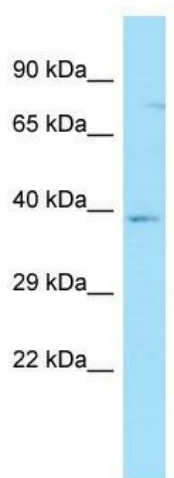


[View online »](#)

Protein Families: Druggable Genome, GPCR, Transmembrane

Protein Pathways: Neuroactive ligand-receptor interaction

Product images:



WB Suggested Anti-GPR35 Antibody; Titration: 1.0 ug/ml; Positive Control: MCF7 Whole Cell