

## Product datasheet for **TA338285**

### ECM2 Rabbit Polyclonal Antibody

#### Product data:

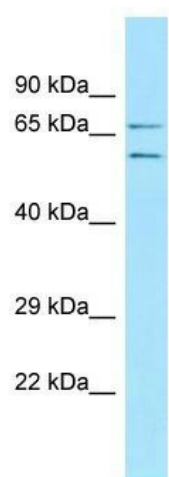
Product Type:	Primary Antibodies
Applications:	WB
Recommended Dilution:	WB
Reactivity:	Human
Host:	Rabbit
Isotype:	IgG
Clonality:	Polyclonal
Immunogen:	The immunogen for anti-ECM2 antibody is: synthetic peptide directed towards the N-terminal region of Human ECM2. Synthetic peptide located within the following region: FGKNEEIPRKQRRKIYHRRLRKSSTSHKHSNRQLGIQQTTFVTPVARLP
Formulation:	Liquid. Purified antibody supplied in 1x PBS buffer with 0.09% (w/v) sodium azide and 2% sucrose. <i>Note that this product is shipped as lyophilized powder to China customers.</i>
Purification:	Affinity Purified
Conjugation:	Unconjugated
Storage:	Store at -20°C as received.
Stability:	Stable for 12 months from date of receipt.
Predicted Protein Size:	71 kDa
Gene Name:	extracellular matrix protein 2
Database Link:	<a href="#">NP_001184225</a> <a href="#">Entrez Gene 1842 Human</a> <a href="#">O94769</a>
Background:	ECM2 encodes extracellular matrix protein 2, so named because it shares extensive similarity with known extracellular matrix proteins. Three transcript variants encoding different isoforms have been found for this gene.
Synonyms:	MGC126355; MGC126356
Note:	Immunogen Sequence Homology: Human: 100%



[View online »](#)

Protein Families: Secreted Protein

### Product images:



WB Suggested Anti-ECM2 Antibody; Titration: 1.0 ug/ml; Positive Control: 293T Whole Cell