

## Product datasheet for **TA338284**

### RPL11 Rabbit Polyclonal Antibody

#### Product data:

Product Type:	Primary Antibodies
Applications:	WB
Recommended Dilution:	WB
Reactivity:	Human
Host:	Rabbit
Isotype:	IgG
Clonality:	Polyclonal
Immunogen:	The immunogen for anti-RPL11 antibody is: synthetic peptide directed towards the C-terminal region of Human RPL11. Synthetic peptide located within the following region: DFYVVLGRPGFSIADKKRRTGCIGAKHRISKEEAMRWFQQKYDGIILPGK
Formulation:	Liquid. Purified antibody supplied in 1x PBS buffer with 0.09% (w/v) sodium azide and 2% sucrose. <i>Note that this product is shipped as lyophilized powder to China customers.</i>
Purification:	Affinity Purified
Conjugation:	Unconjugated
Storage:	Store at -20°C as received.
Stability:	Stable for 12 months from date of receipt.
Predicted Protein Size:	20 kDa
Gene Name:	ribosomal protein L11
Database Link:	<a href="#">NP_001186731</a> <a href="#">Entrez Gene 6135 Human</a> <a href="#">P62913</a>



[View online »](#)

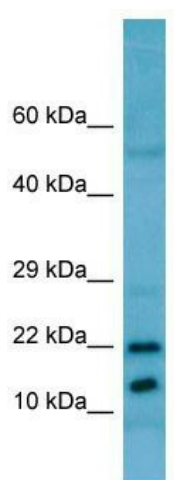
**Background:** Ribosomes, the organelles that catalyze protein synthesis, consist of a small 40S subunit and a large 60S subunit. Together these subunits are composed of 4 RNA species and approximately 80 structurally distinct proteins. This gene encodes a ribosomal protein that is a component of the 60S subunit. The protein belongs to the L5P family of ribosomal proteins. It is located in the cytoplasm. The protein probably associates with the 5S rRNA. Alternatively spliced transcript variants encoding different isoforms have been found for this gene. As is typical for genes encoding ribosomal proteins, there are multiple processed pseudogenes of this gene dispersed through the genome.

**Synonyms:** DBA7; GIG34; L11

**Note:** Immunogen Sequence Homology: Dog: 100%; Pig: 100%; Rat: 100%; Horse: 100%; Human: 100%; Mouse: 100%; Bovine: 100%; Rabbit: 100%; Guinea pig: 100%; Zebrafish: 86%

**Protein Pathways:** Ribosome

### Product images:



WB Suggested Anti-RPL11 Antibody; Titration: 1.0 ug/ml; Positive Control: HeLa Whole Cell RPL11 is supported by BioGPS gene expression data to be expressed in HeLa