

Product datasheet for **TA338278**

MOB4A (MOB1B) Rabbit Polyclonal Antibody

Product data:

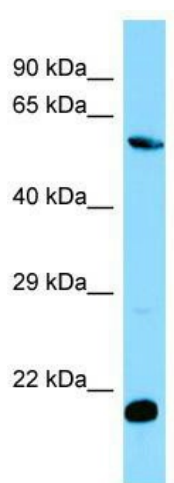
Product Type:	Primary Antibodies
Applications:	WB
Recommended Dilution:	WB
Reactivity:	Human
Host:	Rabbit
Isotype:	IgG
Clonality:	Polyclonal
Immunogen:	The immunogen for anti-MOB1B antibody is: synthetic peptide directed towards the C-terminal region of Human MOB1B. Synthetic peptide located within the following region: PVMSAGPKYEHWADGTNIKKPIKCSAPKYIDYLMTWVQDQLDDETLFPS
Formulation:	Liquid. Purified antibody supplied in 1x PBS buffer with 0.09% (w/v) sodium azide and 2% sucrose. <i>Note that this product is shipped as lyophilized powder to China customers.</i>
Purification:	Affinity Purified
Conjugation:	Unconjugated
Storage:	Store at -20°C as received.
Stability:	Stable for 12 months from date of receipt.
Predicted Protein Size:	16 kDa
Gene Name:	MOB kinase activator 1B
Database Link:	NP_001231696 Entrez Gene 92597 Human Q7L9L4
Background:	The protein encoded by this gene is similar to the yeast Mob1 protein. Yeast Mob1 binds Mps1p, a protein kinase essential for spindle pole body duplication and mitotic checkpoint regulation. Three transcript variants encoding different isoforms have been found for this gene.
Synonyms:	MATS2; MOB4A; MOBKL1A



[View online »](#)

Note: Immunogen Sequence Homology: Dog: 100%; Pig: 100%; Rat: 100%; Horse: 100%; Human: 100%; Mouse: 100%; Bovine: 100%; Rabbit: 100%; Zebrafish: 100%; Guinea pig: 100%

Product images:



WB Suggested Anti-MOB1B Antibody; Titration: 1.0 ug/ml; Positive Control: Jurkat Whole Cell