

Product datasheet for TA338277

C22orf25 (TANGO2) Rabbit Polyclonal Antibody

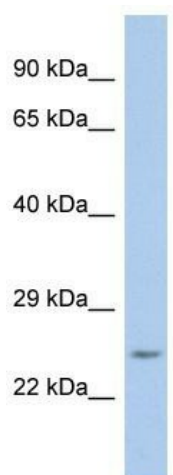
Product data:

Product Type:	Primary Antibodies
Applications:	WB
Recommended Dilution:	WB
Reactivity:	Human
Host:	Rabbit
Isotype:	IgG
Clonality:	Polyclonal
Immunogen:	The immunogen for anti-TANGO2 antibody is: synthetic peptide directed towards the middle region of Human TANGO2. Synthetic peptide located within the following region: LDWQARGRGTYGLSNALLETPWRKLCFGKQLFLEAVERSQALPKDVLIAS
Formulation:	Liquid. Purified antibody supplied in 1x PBS buffer with 0.09% (w/v) sodium azide and 2% sucrose. <i>Note that this product is shipped as lyophilized powder to China customers.</i>
Purification:	Affinity Purified
Conjugation:	Unconjugated
Storage:	Store at -20°C as received.
Stability:	Stable for 12 months from date of receipt.
Predicted Protein Size:	23 kDa
Gene Name:	transport and golgi organization 2 homolog
Database Link:	NP_001270035 Entrez Gene 128989 Human Q6ICL3
Background:	The function of this protein remains unknown.
Synonyms:	C22orf25; MECRCN
Note:	Immunogen Sequence Homology: Dog: 100%; Pig: 100%; Rat: 100%; Horse: 100%; Human: 100%; Mouse: 100%; Bovine: 100%; Rabbit: 100%; Guinea pig: 100%; Zebrafish: 83%



[View online »](#)

Product images:



Host: Rabbit
Target Name: TANGO2
Sample Tissue: Jurkat Cell Lysate
Antibody Dilution: 1.0µg/ml

Host: Rabbit; Target Name: TANGO2; Sample
Tissue: Jurkat Whole Cell lysates; Antibody
Dilution: 1.0 ug/ml