

## Product datasheet for **TA338275**

### DPAGT1 Rabbit Polyclonal Antibody

#### Product data:

Product Type:	Primary Antibodies
Applications:	WB
Recommended Dilution:	WB
Reactivity:	Human
Host:	Rabbit
Isotype:	IgG
Clonality:	Polyclonal
Immunogen:	The immunogen for anti-DPAGT1 antibody is: synthetic peptide directed towards the C-terminal region of Human DPAGT1. Synthetic peptide located within the following region: TKLSLFLGTFILKVAESLQLVTVHQSETEDGEFTECNMTLINLLKVLG
Formulation:	Liquid. Purified antibody supplied in 1x PBS buffer with 0.09% (w/v) sodium azide and 2% sucrose. <i>Note that this product is shipped as lyophilized powder to China customers.</i>
Purification:	Affinity Purified
Conjugation:	Unconjugated
Storage:	Store at -20°C as received.
Stability:	Stable for 12 months from date of receipt.
Predicted Protein Size:	46 kDa
Gene Name:	dolichyl-phosphate N-acetylglucosaminophosphotransferase 1
Database Link:	<a href="#">NP_001373</a> <a href="#">Entrez Gene 1798 Human</a> <a href="#">Q9H3H5</a>
Background:	The protein encoded by this gene is an enzyme that catalyzes the first step in the dolichol-linked oligosaccharide pathway for glycoprotein biosynthesis. This enzyme belongs to the glycosyltransferase family 4. This protein is an integral membrane protein of the endoplasmic reticulum. The congenital disorder of glycosylation type Ij is caused by mutation in the gene encoding this enzyme.
Synonyms:	ALG7; CDG-Ij; CDG1j; CMSTA2; D11S366; DGPT; DPAGT; DPAGT2; G1PT; GPT; UAGT; UGAT



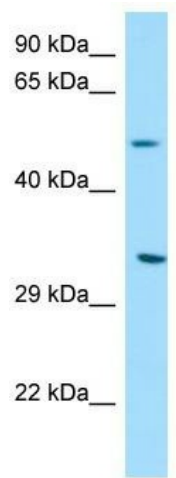
[View online »](#)

**Note:** Immunogen Sequence Homology: Human: 100%; Dog: 86%; Rat: 86%; Pig: 79%; Horse: 79%; Mouse: 79%; Guinea pig: 79%; Rabbit: 77%

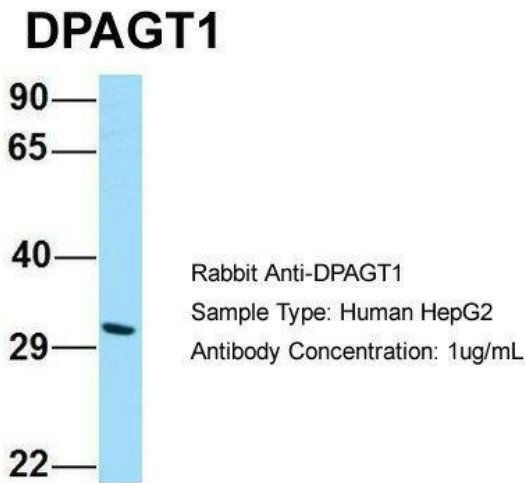
**Protein Families:** Transmembrane

**Protein Pathways:** Metabolic pathways, N-Glycan biosynthesis

**Product images:**

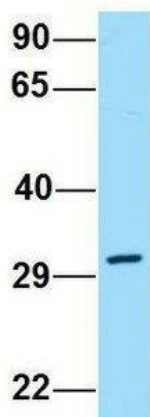


WB Suggested Anti-DPAGT1 Antibody; Titration: 1.0 ug/ml; Positive Control: PANC1 Whole Cell DPAGT1 is supported by BioGPS gene expression data to be expressed in PANC1



Host: Rabbit; Target Name: DPAGT1; Sample Tissue: Human HepG2; Antibody Dilution: 1.0 ug/ml DPAGT1 is supported by BioGPS gene expression data to be expressed in HepG2

## DPAGT1



Rabbit Anti-DPAGT1  
Sample Type: Human MCF7  
Antibody Concentration: 1ug/mL

Host: Rabbit; Target Name: DPAGT1; Sample Tissue: Human MCF7; Antibody Dilution: 1.0 ug/ml DPAGT1 is supported by BioGPS gene expression data to be expressed in MCF7