

Product datasheet for **TA338271**

Glypican 4 (GPC4) Rabbit Polyclonal Antibody

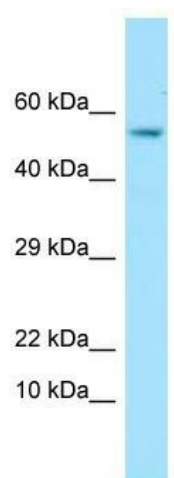
Product data:

Product Type:	Primary Antibodies
Applications:	WB
Recommended Dilution:	WB
Reactivity:	Human
Host:	Rabbit
Isotype:	IgG
Clonality:	Polyclonal
Immunogen:	The immunogen for anti-GPC4 antibody is: synthetic peptide directed towards the C-terminal region of Human GPC4. Synthetic peptide located within the following region: EYQQCPSEFDYNATDHAGKSANEKADSAGVRPGAQAYLLTVFCILFLVMQ
Formulation:	Liquid. Purified antibody supplied in 1x PBS buffer with 0.09% (w/v) sodium azide and 2% sucrose. <i>Note that this product is shipped as lyophilized powder to China customers.</i>
Purification:	Affinity Purified
Conjugation:	Unconjugated
Storage:	Store at -20°C as received.
Stability:	Stable for 12 months from date of receipt.
Predicted Protein Size:	53 kDa
Gene Name:	glypican 4
Database Link:	NP_001439 Entrez Gene 2239 Human O75487
Background:	GPC4 is a cell surface proteoglycan that bears heparan sulfate.
Synonyms:	K-glypican
Note:	Immunogen Sequence Homology: Human: 100%; Pig: 93%; Rat: 93%; Mouse: 93%; Guinea pig: 93%; Rabbit: 86%; Bovine: 79%
Protein Families:	Druggable Genome



[View online »](#)

Product images:



Host: Rabbit; Target Name: GPC4; Sample Tissue: HT1080 Whole Cell lysates; Antibody Dilution: 1.0 ug/ml