

## Product datasheet for **TA338270**

### Motilin receptor (MLNR) Rabbit Polyclonal Antibody

#### Product data:

Product Type:	Primary Antibodies
Applications:	WB
Recommended Dilution:	WB
Reactivity:	Human
Host:	Rabbit
Isotype:	IgG
Clonality:	Polyclonal
Immunogen:	The immunogen for anti-MLNR antibody is: synthetic peptide directed towards the C-terminal region of Human MLNR. Synthetic peptide located within the following region: ASINPILYNLISKKYRAAAFKLLLARKSRPRGFHRSRDTAGEVAGDTGGD
Formulation:	Liquid. Purified antibody supplied in 1x PBS buffer with 0.09% (w/v) sodium azide and 2% sucrose. <i>Note that this product is shipped as lyophilized powder to China customers.</i>
Purification:	Affinity Purified
Conjugation:	Unconjugated
Storage:	Store at -20°C as received.
Stability:	Stable for 12 months from date of receipt.
Predicted Protein Size:	45 kDa
Gene Name:	motilin receptor
Database Link:	<a href="#">NP_001498</a> <a href="#">Entrez Gene 2862 Human</a> <a href="#">O43193</a>
Background:	Motilin is a 22 amino acid peptide hormone expressed throughout the gastrointestinal (GI) tract. The protein encoded by this gene is a motilin receptor which is a member of the G-protein coupled receptor 1 family. This member is a multi-pass transmembrane protein, and is an important therapeutic target for the treatment of hypomotility disorders.
Synonyms:	GPR38; MTLR1
Note:	Immunogen Sequence Homology: Human: 100%

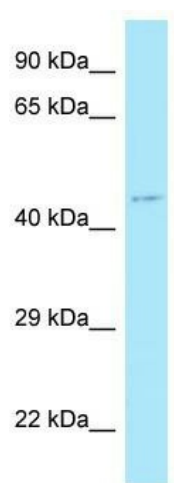


[View online »](#)

Protein Families: Druggable Genome, Transmembrane

Protein Pathways: Neuroactive ligand-receptor interaction

### Product images:



WB Suggested Anti-MLNR Antibody; Titration: 1.0 ug/ml; Positive Control: Hela Whole Cell