

Product datasheet for **TA338269**

Orexin Receptor 1 (HCRTR1) Rabbit Polyclonal Antibody

Product data:

Product Type:	Primary Antibodies
Applications:	WB
Recommended Dilution:	WB
Reactivity:	Human
Host:	Rabbit
Isotype:	IgG
Clonality:	Polyclonal
Immunogen:	The immunogen for anti-HCRTR1 antibody is: synthetic peptide directed towards the N-terminal region of Human HCRTR1. Synthetic peptide located within the following region: ATPGAQMGVPPGSREPSVPPDYEDFLRYLWRDYLYPKQYEWVLI AAYV
Formulation:	Liquid. Purified antibody supplied in 1x PBS buffer with 0.09% (w/v) sodium azide and 2% sucrose. <i>Note that this product is shipped as lyophilized powder to China customers.</i>
Purification:	Affinity Purified
Conjugation:	Unconjugated
Storage:	Store at -20°C as received.
Stability:	Stable for 12 months from date of receipt.
Predicted Protein Size:	47 kDa
Gene Name:	hypocretin receptor 1
Database Link:	NP_001516 Entrez Gene 3061 Human O43613
Background:	The protein encoded by this gene is a G-protein coupled receptor involved in the regulation of feeding behavior. The encoded protein selectively binds the hypothalamic neuropeptide orexin A. A related gene (HCRTR2) encodes a G-protein coupled receptor that binds orexin A and orexin B.
Synonyms:	OX1R



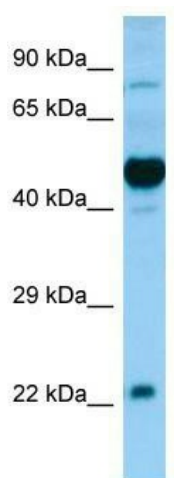
[View online »](#)

Note: Immunogen Sequence Homology: Rat: 100%; Human: 100%; Dog: 91%; Bovine: 85%; Pig: 83%; Guinea pig: 83%; Rabbit: 79%

Protein Families: Druggable Genome, ES Cell Differentiation/IPS, GPCR, Transmembrane

Protein Pathways: Neuroactive ligand-receptor interaction

Product images:



WB Suggested Anti-HCRT1 Antibody; Titration: 0.25 ug/ml; Positive Control: Fetal Brain