

Product datasheet for **TA338268**

IGFBP4 Rabbit Polyclonal Antibody

Product data:

Product Type:	Primary Antibodies
Applications:	IHC, WB
Recommended Dilution:	WB, IHC
Reactivity:	Human, Mouse
Host:	Rabbit
Isotype:	IgG
Clonality:	Polyclonal
Immunogen:	The immunogen for anti-IGFBP4 antibody: synthetic peptide directed towards the middle region of human IGFBP4. Synthetic peptide located within the following region: RALERLAASQSRTHEDLYIIPNCDRNGNFHPKQCHPALDGQRGKCWCV
Formulation:	Liquid. Purified antibody supplied in 1x PBS buffer with 0.09% (w/v) sodium azide and 2% sucrose. <i>Note that this product is shipped as lyophilized powder to China customers.</i>
Purification:	Affinity Purified
Conjugation:	Unconjugated
Storage:	Store at -20°C as received.
Stability:	Stable for 12 months from date of receipt.
Predicted Protein Size:	26 kDa
Gene Name:	insulin like growth factor binding protein 4
Database Link:	NP_001543 Entrez Gene 16010 Mouse Entrez Gene 3487 Human P22692
Background:	This gene is a member of the insulin-like growth factor binding protein (IGFBP) family and encodes a protein with an IGFBP domain and a thyroglobulin type-I domain. The protein binds both insulin-like growth factors (IGFs) I and II and circulates in the plasma in both glycosylated and non-glycosylated forms. Binding of this protein prolongs the half-life of the IGFs and alters their interaction with cell surface receptors. [provided by RefSeq, Jul 2008]
Synonyms:	BP-4; HT29-IGFBP; IBP4; IGFBP-4

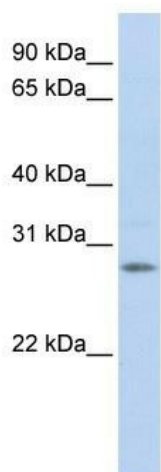


[View online »](#)

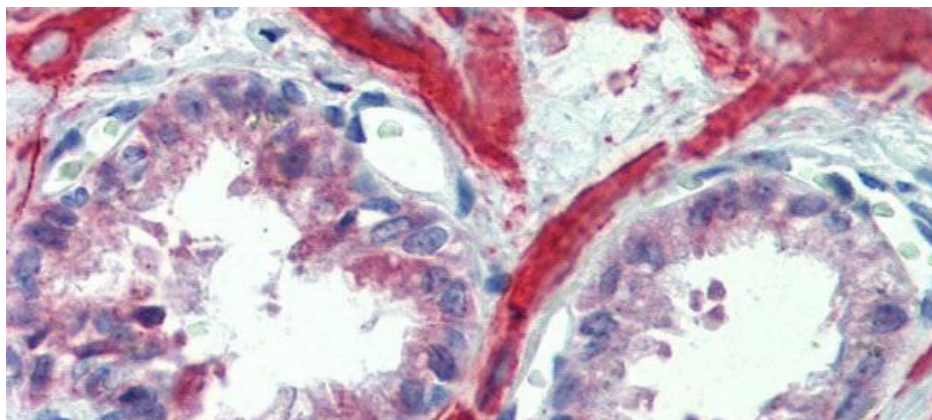
Note: Immunogen Sequence Homology: Dog: 100%; Rat: 100%; Goat: 100%; Horse: 100%; Human: 100%; Mouse: 100%; Sheep: 100%; Bovine: 100%; Rabbit: 100%; Pig: 93%; Guinea pig: 93%

Protein Families: Secreted Protein

Product images:



WB Suggested Anti-IGFBP4 Antibody Titration: 1 ug/ml; Positive Control: Fetal Brain Lysate



Immunohistochemistry with Human Prostate lysate tissue at an antibody concentration of 5.0 ug/ml using anti-IGFBP4 antibody