

## Product datasheet for **TA338267**

### ACTG2 Rabbit Polyclonal Antibody

#### Product data:

Product Type:	Primary Antibodies
Applications:	WB
Recommended Dilution:	WB
Reactivity:	Human
Host:	Rabbit
Isotype:	IgG
Clonality:	Polyclonal
Immunogen:	The immunogen for anti-ACTG2 antibody is: synthetic peptide directed towards the C-terminal region of Human ACTG2. Synthetic peptide located within the following region: TMKIKIAPPKYSVWIGGSILASLSTFQQMWISKPEYDEAGPSIVHRK
Formulation:	Liquid. Purified antibody supplied in 1x PBS buffer with 0.09% (w/v) sodium azide and 2% sucrose. <i>Note that this product is shipped as lyophilized powder to China customers.</i>
Purification:	Affinity Purified
Conjugation:	Unconjugated
Storage:	Store at -20°C as received.
Stability:	Stable for 12 months from date of receipt.
Predicted Protein Size:	42 kDa
Gene Name:	actin, gamma 2, smooth muscle, enteric
Database Link:	<a href="#">NP_001606</a> <a href="#">Entrez Gene 72 Human P63267</a>



[View online »](#)

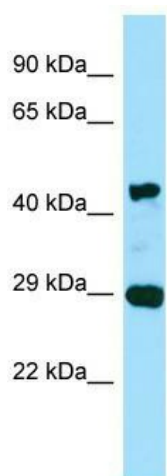
**Background:** Actins are highly conserved proteins that are involved in various types of cell motility and in the maintenance of the cytoskeleton. Three types of actins, alpha, beta and gamma, have been identified in vertebrates. Alpha actins are found in muscle tissues and are a major constituent of the contractile apparatus. The beta and gamma actins co-exist in most cell types as components of the cytoskeleton and as mediators of internal cell motility. This gene encodes actin gamma 2; a smooth muscle actin found in enteric tissues. Alternative splicing results in multiple transcript variants encoding distinct isoforms. Based on similarity to peptide cleavage of related actins, the mature protein of this gene is formed by removal of two N-terminal peptides.

**Synonyms:** ACT; ACTA3; ACTE; ACTL3; ACTSG; VSCM

**Note:** Immunogen Sequence Homology: Dog: 100%; Pig: 100%; Rat: 100%; Horse: 100%; Human: 100%; Mouse: 100%; Bovine: 100%; Rabbit: 100%; Guinea pig: 100%; Goat: 93%; Yeast: 93%; Zebrafish: 93%

**Protein Pathways:** Vascular smooth muscle contraction

### Product images:



WB Suggested Anti-ACTG2 Antibody; Titration: 0.25 ug/ml; Positive Control: Fetal Lung