

## Product datasheet for **TA338266**

### BAAT Rabbit Polyclonal Antibody

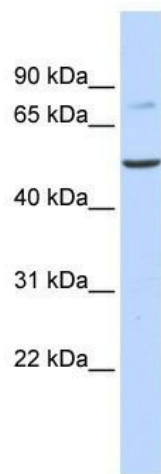
#### Product data:

Product Type:	Primary Antibodies
Applications:	WB
Recommended Dilution:	WB
Reactivity:	Human
Host:	Rabbit
Isotype:	IgG
Clonality:	Polyclonal
Immunogen:	The immunogen for anti-BAAT antibody: synthetic peptide directed towards the N terminal of human BAAT. Synthetic peptide located within the following region: IQLTATPVSALVDEPVHIRATGLIPFQMVSFQASLEDENGDMFYSAHYR
Formulation:	Liquid. Purified antibody supplied in 1x PBS buffer with 0.09% (w/v) sodium azide and 2% sucrose. <i>Note that this product is shipped as lyophilized powder to China customers.</i>
Purification:	Affinity Purified
Conjugation:	Unconjugated
Storage:	Store at -20°C as received.
Stability:	Stable for 12 months from date of receipt.
Predicted Protein Size:	46 kDa
Gene Name:	bile acid-CoA:amino acid N-acyltransferase
Database Link:	<a href="#">NP_001692</a> <a href="#">Entrez Gene 570 Human</a> <a href="#">Q14032</a>



[View online »](#)

- Background:** Plastins are a family of actin-binding proteins that are conserved throughout eukaryote evolution and expressed in most tissues of higher eukaryotes. In humans, two ubiquitous plastin isoforms (L and T) have been identified. Plastin 1 (otherwise known as Fimbrin) is a third distinct plastin isoform which is specifically expressed at high levels in the small intestine. The L isoform is expressed only in hemopoietic cell lineages, while the T isoform has been found in all other normal cells of solid tissues that have replicative potential (fibroblasts, endothelial cells, epithelial cells, melanocytes, etc.). The C-terminal 570 amino acids of the T-plastin and L-plastin proteins are 83% identical. It contains a potential calcium-binding site near the N terminus. Alternate splicing results in multiple transcript variants. [provided by RefSeq, Feb 2010]
- Synonyms:** BACAT; BAT
- Note:** Immunogen Sequence Homology: Horse: 100%; Human: 100%; Rabbit: 100%; Dog: 93%; Rat: 93%; Mouse: 93%; Pig: 86%; Bovine: 86%; Guinea pig: 86%
- Protein Pathways:** Biosynthesis of unsaturated fatty acids, Metabolic pathways, Primary bile acid biosynthesis, Taurine and hypotaurine metabolism

**Product images:**

WB Suggested Anti-BAAT Antibody Titration: 0.2-1 ug/ml; ELISA Titer: 1: 62500; Positive Control: Human Liver