

## Product datasheet for **TA338265**

### **BMP8B Rabbit Polyclonal Antibody**

#### **Product data:**

<b>Product Type:</b>	Primary Antibodies
<b>Applications:</b>	WB
<b>Recommended Dilution:</b>	WB
<b>Reactivity:</b>	Human
<b>Host:</b>	Rabbit
<b>Isotype:</b>	IgG
<b>Clonality:</b>	Polyclonal
<b>Immunogen:</b>	The immunogen for anti-BMP8B antibody is: synthetic peptide directed towards the N-terminal region of Human BMP8B. Synthetic peptide located within the following region: CPQRRLGARERRDVQREILAVLGLPGRPRPRAPPAASRLPASAPLFMLDL
<b>Formulation:</b>	Liquid. Purified antibody supplied in 1x PBS buffer with 0.09% (w/v) sodium azide and 2% sucrose. <i>Note that this product is shipped as lyophilized powder to China customers.</i>
<b>Purification:</b>	Affinity Purified
<b>Conjugation:</b>	Unconjugated
<b>Storage:</b>	Store at -20°C as received.
<b>Stability:</b>	Stable for 12 months from date of receipt.
<b>Predicted Protein Size:</b>	38 kDa
<b>Gene Name:</b>	bone morphogenetic protein 8b
<b>Database Link:</b>	<a href="#">NP_001711</a> <a href="#">Entrez Gene 656 Human P34820</a>
<b>Background:</b>	The function of this protein remains unknown.
<b>Synonyms:</b>	BMP8; OP2
<b>Note:</b>	Immunogen Sequence Homology: Human: 100%; Pig: 93%; Rat: 93%; Mouse: 93%; Rabbit: 93%; Guinea pig: 93%; Dog: 86%; Bovine: 86%; Horse: 80%; Zebrafish: 80%

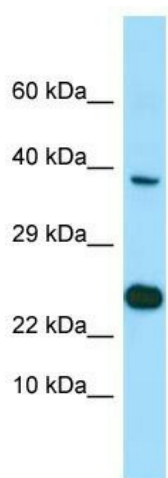


[View online »](#)

**Protein Families:** Adult stem cells, Cancer stem cells, Druggable Genome, Embryonic stem cells, ES Cell Differentiation/IPS, Induced pluripotent stem cells, Secreted Protein, Stem cell relevant signaling - TGFb/BMP signaling pathway

**Protein Pathways:** Hedgehog signaling pathway, TGF-beta signaling pathway

### Product images:



Host: Rabbit

Target Name: BMP8B

Sample Tissue: NCI-H226 Cell Lysate

Antibody Dilution: 1.0 µg/ml

Host: Rabbit; Target Name: BMP8B; Sample Tissue: NCI-H226 Whole Cell lysates; Antibody Dilution: 1.0 ug/ml