

Product datasheet for **TA338264**

TDO2 Rabbit Polyclonal Antibody

Product data:

Product Type:	Primary Antibodies
Applications:	IHC, WB
Recommended Dilution:	IHC, WB
Reactivity:	Human
Host:	Rabbit
Isotype:	IgG
Clonality:	Polyclonal
Immunogen:	The immunogen for anti-TDO2 antibody: synthetic peptide directed towards the N terminal of human TDO2. Synthetic peptide located within the following region: MSGCPFLGNNFGYTFKKLPVEGSEEDKSQTGVNRASKGGLIYGNYLHLEK
Formulation:	Liquid. Purified antibody supplied in 1x PBS buffer with 0.09% (w/v) sodium azide and 2% sucrose. <i>Note that this product is shipped as lyophilized powder to China customers.</i>
Purification:	Affinity Purified
Conjugation:	Unconjugated
Storage:	Store at -20°C as received.
Stability:	Stable for 12 months from date of receipt.
Predicted Protein Size:	48 kDa
Gene Name:	tryptophan 2,3-dioxygenase
Database Link:	NP_005642 Entrez Gene 6999 Human P48775
Background:	This gene encodes a heme enzyme that plays a critical role in tryptophan metabolism by catalyzing the first and rate-limiting step of the kynurenine pathway. Increased activity of the encoded protein and subsequent kynurenine production may also play a role in cancer through the suppression of antitumor immune responses, and single nucleotide polymorphisms in this gene may be associated with autism. [provided by RefSeq, Feb 2012]
Synonyms:	HYPTRP; TDO; TO; TPH2; TRPO

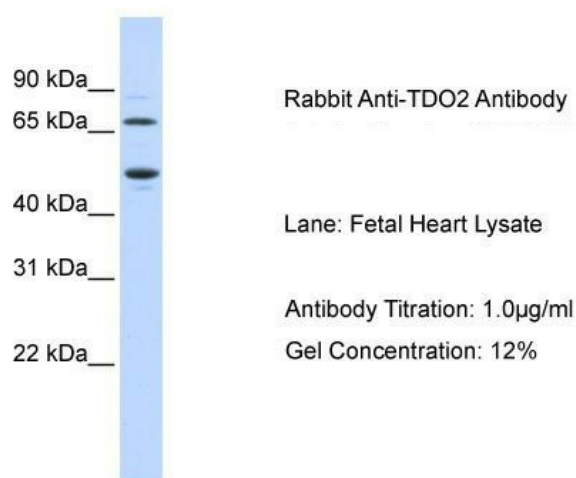


[View online »](#)

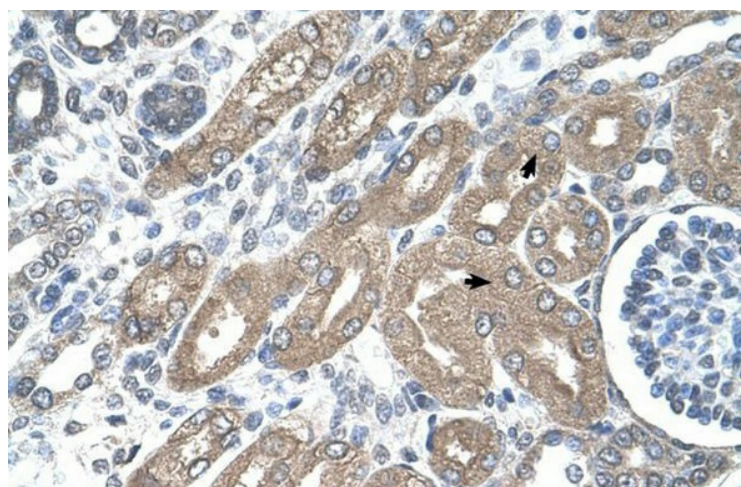
Note: Immunogen Sequence Homology: Human: 100%; Pig: 92%; Dog: 79%

Protein Pathways: Metabolic pathways, Tryptophan metabolism

Product images:



WB Suggested Anti-TDO2 Antibody Titration: 0.2-1 μ g/ml
ELISA Titer: 1: 62500
Positive Control: Human Fetal Heart



Rabbit Anti-CDH8 Antibody; Paraffin Embedded Tissue: Human Kidney; Cellular Data: Epithelial cells of renal tubule; Antibody Concentration: 4.0-8.0 μ g/ml; Magnification: 400X