

## Product datasheet for **TA338263**

### CPS1 Rabbit Polyclonal Antibody

#### Product data:

Product Type:	Primary Antibodies
Applications:	IHC, WB
Recommended Dilution:	WB, IHC
Reactivity:	Human, Pig
Host:	Rabbit
Isotype:	IgG
Clonality:	Polyclonal
Immunogen:	The immunogen for anti-CPS1 antibody: synthetic peptide directed towards the middle region of human CPS1. Synthetic peptide located within the following region: YPSVTNYLYVTYNGQEHDVNFDDHGMMVLGCGPYHIGSSVEFDWCAVSSI
Formulation:	Liquid. Purified antibody supplied in 1x PBS buffer with 0.09% (w/v) sodium azide and 2% sucrose. <i>Note that this product is shipped as lyophilized powder to China customers.</i>
Purification:	Protein A purified
Conjugation:	Unconjugated
Storage:	Store at -20°C as received.
Stability:	Stable for 12 months from date of receipt.
Predicted Protein Size:	165 kDa
Gene Name:	carbamoyl-phosphate synthase 1
Database Link:	<a href="#">NP_001866</a> <a href="#">Entrez Gene 1373 Human</a> <a href="#">P31327</a>

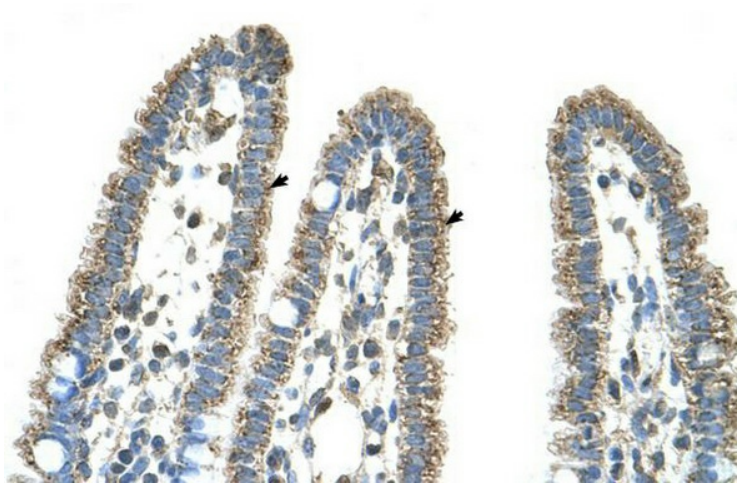


[View online »](#)

<b>Background:</b>	The mitochondrial enzyme encoded by this gene catalyzes synthesis of carbamoyl phosphate from ammonia and bicarbonate. This reaction is the first committed step of the urea cycle, which is important in the removal of excess urea from cells. The encoded protein may also represent a core mitochondrial nucleoid protein. Three transcript variants encoding different isoforms have been found for this gene. The shortest isoform may not be localized to the mitochondrion. Mutations in this gene have been associated with carbamoyl phosphate synthetase deficiency, susceptibility to persistent pulmonary hypertension, and susceptibility to venoocclusive disease after bone marrow transplantation. [provided by RefSeq, May 2010]
<b>Synonyms:</b>	CPSASE1; PHN
<b>Note:</b>	Immunogen Sequence Homology: Human: 100%; Dog: 93%; Horse: 93%; Bovine: 93%; Pig: 86%; Rat: 86%; Rabbit: 86%; Guinea pig: 86%; Mouse: 79%; Yeast: 77%
<b>Protein Families:</b>	Druggable Genome
<b>Protein Pathways:</b>	Alanine, aspartate and glutamate metabolism, Arginine and proline metabolism, Metabolic pathways, Nitrogen metabolism

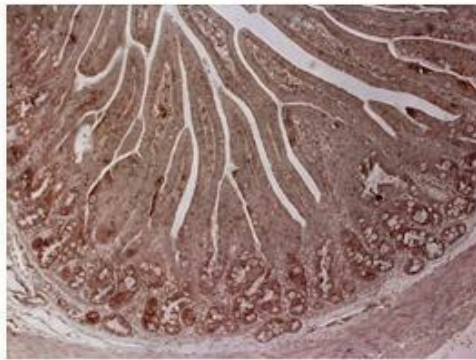
**Product images:**

WB Suggested Anti-CPS1 Antibody Titration: 5.0 ug/ml; Positive Control: Fetal liver cell lysate



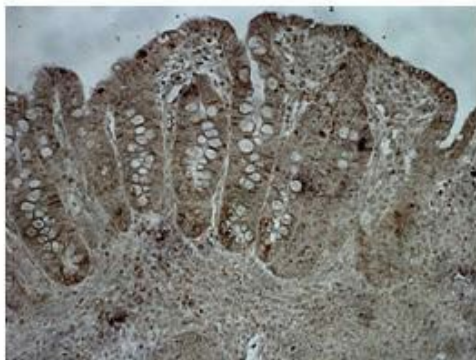
Human Intestine

**CPS**



**Brown: CPS**

**CPS**

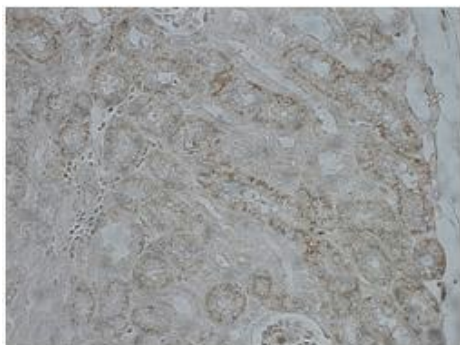


**Brown: CPS**

Sample Type: Pig duodenum Primary Antibody Dilution: 1: 500; Secondary Antibody: Anti-rabbit-biotin, streptavidin-HRP; Secondary Antibody: ilution: 1: 500; Color/Signal Descriptions: Brown: CPS; Gene Name: CPS1; Submitted by: Juan C. Mari, USDA/ARS Child

Sample Type: Pig ileum Primary Antibody Dilution: 1: 500; Secondary Antibody: Anti-rabbit-biotin, streptavidin-HRP; Secondary Antibody: ilution: 1: 500; Color/Signal Descriptions: Brown: CPS; Gene Name: CPS1; Submitted by: Juan C. Mari, USDA/ARS Children

## CPS

**Brown: CPS**

Sample Type: Pig kidney Primary Antibody  
Dilution: 1: 500; Secondary Antibody: Anti-rabbit-  
biotin, streptavidin-HRP; Secondary Antibody:  
dilution: 1: 500; Color/Signal Descriptions: Brown:  
CPS; Gene Name: CPS1; Submitted by: Juan C.  
Mari, USDA/ARS Childre