

## Product datasheet for TA338255

### CD49b (ITGA2) Rabbit Polyclonal Antibody

#### Product data:

Product Type:	Primary Antibodies
Applications:	IF, WB
Recommended Dilution:	IF, WB
Reactivity:	Human
Host:	Rabbit
Isotype:	IgG
Clonality:	Polyclonal
Immunogen:	The immunogen for anti-ITGA2 antibody is: synthetic peptide directed towards the C-terminal region of Human ITGA2. Synthetic peptide located within the following region: LQNLQNGASLSFQALSESQEENKADNLVNLKIPLLYDAEIHTRSTNINF
Formulation:	Liquid. Purified antibody supplied in 1x PBS buffer with 0.09% (w/v) sodium azide and 2% sucrose. <i>Note that this product is shipped as lyophilized powder to China customers.</i>
Purification:	Affinity Purified
Conjugation:	Unconjugated
Storage:	Store at -20°C as received.
Stability:	Stable for 12 months from date of receipt.
Predicted Protein Size:	126 kDa
Gene Name:	integrin subunit alpha 2
Database Link:	<a href="#">NP_002194</a> <a href="#">Entrez Gene 3673 Human P17301</a>
Background:	This gene product belongs to the integrin alpha chain family. Integrins are heterodimeric integral membrane glycoproteins composed of a distinct alpha chain and a common beta chain. They are found on a wide variety of cell types including, T cells, fibroblasts and platelets. Integrins are involved in cell adhesion and also participate in cell-surface mediated signalling.
Synonyms:	BR; CD49B; GPIa; HPA-5; VLA-2; VLAA2



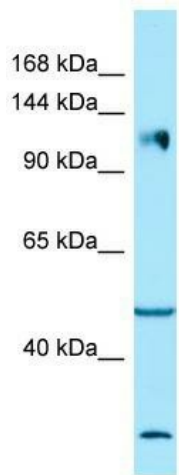
[View online »](#)

**Note:** Immunogen Sequence Homology: Human: 100%; Dog: 93%; Pig: 93%; Bovine: 92%; Rat: 86%; Horse: 86%; Mouse: 86%; Rabbit: 86%; Guinea pig: 79%

**Protein Families:** Druggable Genome, Transmembrane

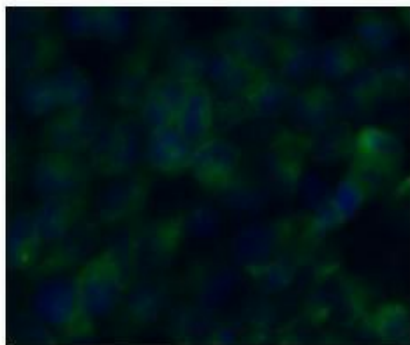
**Protein Pathways:** Arrhythmogenic right ventricular cardiomyopathy (ARVC), Dilated cardiomyopathy, ECM-receptor interaction, Focal adhesion, Hematopoietic cell lineage, Hypertrophic cardiomyopathy (HCM), Pathways in cancer, Regulation of actin cytoskeleton, Small cell lung cancer

**Product images:**



**ITGA2**

WB Suggested Anti-ITGA2 Antibody; Titration: 1.0 ug/ml; Positive Control: HT1080 Whole Cell ITGA2 is supported by BioGPS gene expression data to be expressed in HT1080



**Green: ITGA2  
Blue: DAPI**

Sample Type : HeLa cells  
Primary Antibody Dilution : 1:150  
Secondary Antibody : Goat anti-rabbit-Alexa Fluor 488  
Secondary Antibody Dilution : 1:800  
Color/Signal Descriptions : Green: ITGA2 Blue: DAPI  
Gene Name : ITGA2  
Submitted by : COCOLA Cinzia, Stem Cell B