

Product datasheet for **TA338254**

NTH1 (NTHL1) Rabbit Polyclonal Antibody

Product data:

Product Type:	Primary Antibodies
Applications:	WB
Recommended Dilution:	WB
Reactivity:	Human
Host:	Rabbit
Isotype:	IgG
Clonality:	Polyclonal
Immunogen:	The immunogen for anti-NTHL1 antibody is: synthetic peptide directed towards the N-terminal region of Human NTHL1. Synthetic peptide located within the following region: DWQQQLVNIRAMRNKKDAPVDHLGTEHCYDSSAPPKVRRYQVLLSLMLSS
Formulation:	Liquid. Purified antibody supplied in 1x PBS buffer with 0.09% (w/v) sodium azide and 2% sucrose. <i>Note that this product is shipped as lyophilized powder to China customers.</i>
Purification:	Affinity Purified
Conjugation:	Unconjugated
Storage:	Store at -20°C as received.
Stability:	Stable for 12 months from date of receipt.
Predicted Protein Size:	34 kDa
Gene Name:	nth-like DNA glycosylase 1
Database Link:	NP_002519 Entrez Gene 4913 Human P78549
Background:	The protein encoded by this gene is a DNA N-glycosylase of the endonuclease III family. Like a similar protein in E. coli, the encoded protein has DNA glycosylase activity on DNA substrates containing oxidized pyrimidine residues and has apurinic/apyrimidinic lyase activity.
Synonyms:	hNTH1; NTH1; OCTS3
Note:	Immunogen Sequence Homology: Human: 100%; Horse: 93%; Mouse: 93%; Pig: 87%; Dog: 79%; Rat: 79%; Bovine: 79%; Guinea pig: 79%

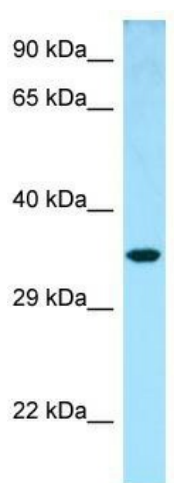


[View online »](#)

Protein Families: Druggable Genome, Stem cell - Pluripotency

Protein Pathways: Base excision repair

Product images:



WB Suggested Anti-NTHL1 Antibody; Titration: 1.0 ug/ml; Positive Control: Fetal Lung