

Product datasheet for **TA338253**

Protein Phosphatase 1 beta (PPP1CB) Rabbit Polyclonal Antibody

Product data:

Product Type:	Primary Antibodies
Applications:	WB
Recommended Dilution:	WB
Reactivity:	Human
Host:	Rabbit
Isotype:	IgG
Clonality:	Polyclonal
Immunogen:	The immunogen for anti-PPP1CB antibody is: synthetic peptide directed towards the C-terminal region of Human PPP1CB. Synthetic peptide located within the following region: VPDTGLLCDLLWSDPKDVQGWGENDRGVSFTFGADVSKFLNRHDLCLI
Formulation:	Liquid. Purified antibody supplied in 1x PBS buffer with 0.09% (w/v) sodium azide and 2% sucrose. <i>Note that this product is shipped as lyophilized powder to China customers.</i>
Purification:	Affinity Purified
Conjugation:	Unconjugated
Storage:	Store at -20°C as received.
Stability:	Stable for 12 months from date of receipt.
Predicted Protein Size:	37 kDa
Gene Name:	protein phosphatase 1 catalytic subunit beta
Database Link:	NP_002700 Entrez Gene 5500 Human P62140
Background:	The protein encoded by this gene is one of the three catalytic subunits of protein phosphatase 1 (PP1). PP1 is a serine/threonine specific protein phosphatase known to be involved in the regulation of a variety of cellular processes, such as cell division, glycogen metabolism, muscle contractility, protein synthesis, and HIV-1 viral transcription. Mouse studies suggest that PP1 functions as a suppressor of learning and memory. Two alternatively spliced transcript variants encoding distinct isoforms have been observed.



[View online »](#)

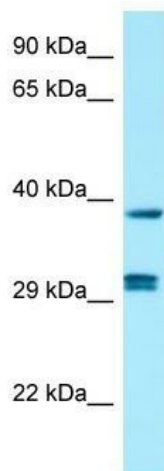
Synonyms: HEL-S-80p; PP-1B; PP1B; PP1beta; PPP1CD

Note: Immunogen Sequence Homology: Dog: 100%; Pig: 100%; Rat: 100%; Horse: 100%; Human: 100%; Mouse: 100%; Bovine: 100%; Rabbit: 100%; Zebrafish: 100%; Guinea pig: 100%; Goat: 93%

Protein Families: Druggable Genome, Phosphatase

Protein Pathways: Focal adhesion, Insulin signaling pathway, Long-term potentiation, Oocyte meiosis, Regulation of actin cytoskeleton, Vascular smooth muscle contraction

Product images:



WB Suggested Anti-PPP1CB Antibody; Titration: 1.0 ug/ml; Positive Control: Fetal Kidney