

Product datasheet for **TA338249**

MRPL12 Rabbit Polyclonal Antibody

Product data:

Product Type:	Primary Antibodies
Applications:	WB
Recommended Dilution:	WB
Reactivity:	Human
Host:	Rabbit
Isotype:	IgG
Clonality:	Polyclonal
Immunogen:	The immunogen for anti-MRPL12 antibody is: synthetic peptide directed towards the middle region of Human MRPL12. Synthetic peptide located within the following region: KKTLKIQDVGLVPMGGVMSGAVPAAAAQEAVEEDIPIAKERTHFTVRLTE
Formulation:	Liquid. Purified antibody supplied in 1x PBS buffer with 0.09% (w/v) sodium azide and 2% sucrose. <i>Note that this product is shipped as lyophilized powder to China customers.</i>
Purification:	Affinity Purified
Conjugation:	Unconjugated
Storage:	Store at -20°C as received.
Stability:	Stable for 12 months from date of receipt.
Predicted Protein Size:	21 kDa
Gene Name:	mitochondrial ribosomal protein L12
Database Link:	NP_002940 Entrez Gene 6182 Human P52815

[View online »](#)

Background:

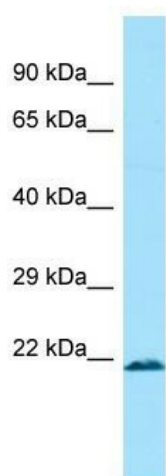
Mammalian mitochondrial ribosomal proteins are encoded by nuclear genes and help in protein synthesis within the mitochondrion. Mitochondrial ribosomes (mitoribosomes) consist of a small 28S subunit and a large 39S subunit. They have an estimated 75% protein to rRNA composition compared to prokaryotic ribosomes, where this ratio is reversed. Another difference between mammalian mitoribosomes and prokaryotic ribosomes is that the latter contain a 5S rRNA. Among different species, the proteins comprising the mitoribosome differ greatly in sequence, and sometimes in biochemical properties, which prevents easy recognition by sequence homology. This gene encodes a 39S subunit protein which forms homodimers. In prokaryotic ribosomes, two L7/L12 dimers and one L10 protein form the L8 protein complex.

Synonyms:

5c5-2; 34; L12; L12mt; MRP-L31; MRPL7; RPML12

Note:

Immunogen Sequence Homology: Human: 100%; Dog: 77%

Product images:


WB Suggested Anti-MRPL12 Antibody; Titration: 1.0 ug/ml; Positive Control: U937 Whole Cell