

Product datasheet for TA338246

SCTR Rabbit Polyclonal Antibody

Product data:

Product Type:	Primary Antibodies
Applications:	WB
Recommended Dilution:	WB
Reactivity:	Human
Host:	Rabbit
Isotype:	IgG
Clonality:	Polyclonal
Immunogen:	The immunogen for anti-SCTR antibody is: synthetic peptide directed towards the N-terminal region of Human SCTR. Synthetic peptide located within the following region: NLACGVNVNDSSNEKRHSYLLKLVMTVGYSSSLVMLLVALGILCAFRR
Formulation:	Liquid. Purified antibody supplied in 1x PBS buffer with 0.09% (w/v) sodium azide and 2% sucrose. <i>Note that this product is shipped as lyophilized powder to China customers.</i>
Purification:	Affinity Purified
Conjugation:	Unconjugated
Storage:	Store at -20°C as received.
Stability:	Stable for 12 months from date of receipt.
Predicted Protein Size:	48 kDa
Gene Name:	secretin receptor
Database Link:	NP_002971 Entrez Gene 6344 Human P47872
Background:	The protein encoded by this gene is a G protein-coupled receptor and belongs to the glucagon-VIP-secretin receptor family. It binds secretin which is the most potent regulator of pancreatic bicarbonate, electrolyte and volume secretion. Secretin and its receptor are suggested to be involved in pancreatic cancer and autism.
Synonyms:	SR



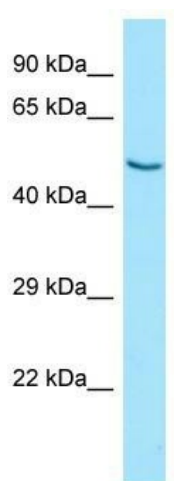
[View online »](#)

Note: Immunogen Sequence Homology: Human: 100%; Dog: 93%; Horse: 93%; Pig: 86%; Bovine: 86%; Guinea pig: 86%

Protein Families: Druggable Genome, Transmembrane

Protein Pathways: Neuroactive ligand-receptor interaction

Product images:



WB Suggested Anti-SCTR Antibody; Titration: 1.0 ug/ml; Positive Control: HepG2 Whole Cell