

## Product datasheet for **TA338244**

### CD162 (SELPLG) Rabbit Polyclonal Antibody

#### Product data:

Product Type:	Primary Antibodies
Applications:	WB
Recommended Dilution:	WB
Reactivity:	Human
Host:	Rabbit
Isotype:	IgG
Clonality:	Polyclonal
Immunogen:	The immunogen for anti-SELPLG antibody is: synthetic peptide directed towards the C-terminal region of Human SELPLG. Synthetic peptide located within the following region: EMVCISLLPDGGEGPSATANGGLSKAKSPGLTPEPREDREGDDLHHSF
Formulation:	Liquid. Purified antibody supplied in 1x PBS buffer with 0.09% (w/v) sodium azide and 2% sucrose. <i>Note that this product is shipped as lyophilized powder to China customers.</i>
Purification:	Affinity Purified
Conjugation:	Unconjugated
Storage:	Store at -20°C as received.
Stability:	Stable for 12 months from date of receipt.
Predicted Protein Size:	39 kDa
Gene Name:	selectin P ligand
Database Link:	<a href="#">NP_002997</a> <a href="#">Entrez Gene 6404 Human Q14242</a>



[View online »](#)

**Background:** This gene encodes a glycoprotein that functions as a high affinity counter-receptor for the cell adhesion molecules P-, E- and L- selectin expressed on myeloid cells and stimulated T lymphocytes. As such, this protein plays a critical role in leukocyte trafficking during inflammation by tethering of leukocytes to activated platelets or endothelia expressing selectins. This protein requires two post-translational modifications, tyrosine sulfation and the addition of the sialyl Lewis x tetrasaccharide (sLex) to its O-linked glycans, for its high-affinity binding activity. Aberrant expression of this gene and polymorphisms in this gene are associated with defects in the innate and adaptive immune response. Alternate splicing results in multiple transcript variants.

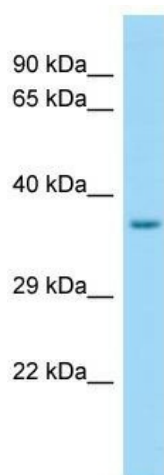
**Synonyms:** CD162; CLA; PSGL-1; PSGL1

**Note:** Immunogen Sequence Homology: Human: 100%; Pig: 92%; Guinea pig: 92%; Bovine: 91%; Dog: 83%; Rat: 83%

**Protein Families:** Druggable Genome, Transmembrane

**Protein Pathways:** Cell adhesion molecules (CAMs)

### Product images:



WB Suggested Anti-SELPLG Antibody; Titration: 1.0 ug/ml; Positive Control: Fetal Heart