

Product datasheet for **TA338242**

SPAG1 Rabbit Polyclonal Antibody

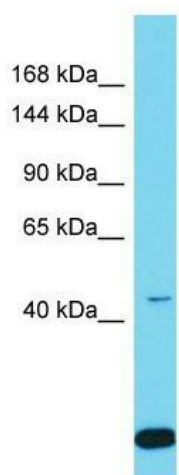
Product data:

Product Type:	Primary Antibodies
Applications:	WB
Recommended Dilution:	WB
Reactivity:	Human
Host:	Rabbit
Isotype:	IgG
Clonality:	Polyclonal
Immunogen:	The immunogen for anti-SPAG1 antibody is: synthetic peptide directed towards the N-terminal region of Human SPAG1. Synthetic peptide located within the following region: LHVGKEKYSKRPTKKKTPRDYAEWDFDVEKECLKIDEDYKEKTVIDKSH
Formulation:	Liquid. Purified antibody supplied in 1x PBS buffer with 0.09% (w/v) sodium azide and 2% sucrose. <i>Note that this product is shipped as lyophilized powder to China customers.</i>
Purification:	Affinity Purified
Conjugation:	Unconjugated
Storage:	Store at -20°C as received.
Stability:	Stable for 12 months from date of receipt.
Predicted Protein Size:	45 kDa
Gene Name:	sperm associated antigen 1
Database Link:	NP_003105 Entrez Gene 6674 Human Q07617
Background:	The function of this protein remains unknown.
Synonyms:	CILD28; CT140; HEL-S-268; HSD-3.8; SP75; TPIS
Note:	Immunogen Sequence Homology: Human: 100%; Dog: 85%



[View online »](#)

Product images:



Host: Rabbit; Target Name: SPAG1; Sample
Tissue: MCF7 Whole Cell lysates; Antibody
Dilution: 1.0 ug/ml