

## Product datasheet for **TA338241**

### SRY Rabbit Polyclonal Antibody

#### Product data:

Product Type:	Primary Antibodies
Applications:	WB
Recommended Dilution:	WB
Reactivity:	Human
Host:	Rabbit
Isotype:	IgG
Clonality:	Polyclonal
Immunogen:	The immunogen for anti-SRY antibody: synthetic peptide directed towards the middle region of human SRY. Synthetic peptide located within the following region: SEVQLDNRLYRDDCTKATHSRMEHQLGHLPPINAASSPQQRDRYSHWTKL
Formulation:	Liquid. Purified antibody supplied in 1x PBS buffer with 0.09% (w/v) sodium azide and 2% sucrose. <i>Note that this product is shipped as lyophilized powder to China customers.</i>
Purification:	Affinity Purified
Conjugation:	Unconjugated
Storage:	Store at -20°C as received.
Stability:	Stable for 12 months from date of receipt.
Predicted Protein Size:	24 kDa
Gene Name:	sex determining region Y
Database Link:	<a href="#">NP_003131</a> <a href="#">Entrez Gene 6736 Human Q05066</a>



[View online »](#)

**Background:**

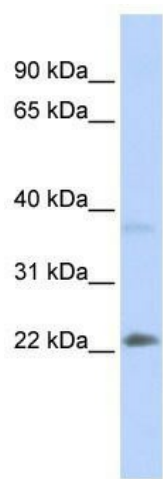
SRY is an intronless gene that encodes for a transcription factor, which is a member of the high mobility group (HMG)-box family of DNA-binding proteins. This protein is the testis-determining factor (TDF), which initiates male sex determination. Mutations in this gene give rise to XY females with gonadal dysgenesis (Swyer syndrome); translocation of part of the Y chromosome containing this gene to the X chromosome causes XX male syndrome. This intronless gene encodes a transcription factor that is a member of the high mobility group (HMG)-box family of DNA-binding proteins. This protein is the testis-determining factor (TDF), which initiates male sex determination. Mutations in this gene give rise to XY females with gonadal dysgenesis (Swyer syndrome); translocation of part of the Y chromosome containing this gene to the X chromosome causes XX male syndrome. Publication Note: This RefSeq record includes a subset of the publications that are available for this gene. Please see the Entrez Gene record to access additional publications.

**Synonyms:**

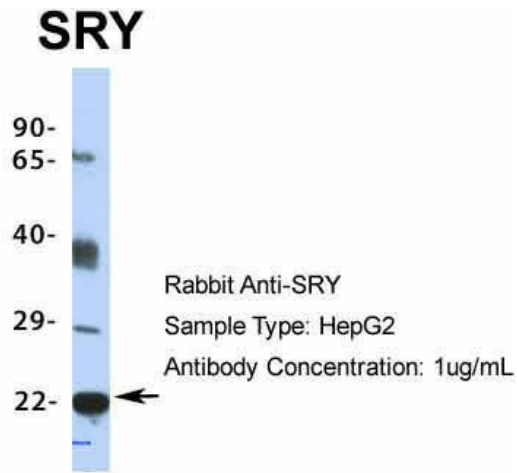
SRXX1; SRXY1; TDF; TDY

**Note:**

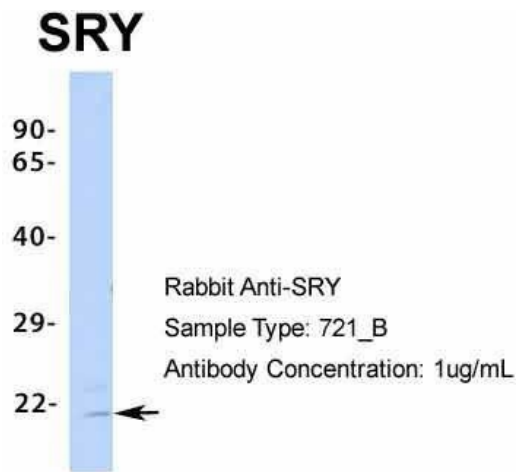
Immunogen Sequence Homology: Human: 100%; Pig: 93%; Rat: 93%

**Product images:**

WB Suggested Anti-SRY Antibody Titration: 0.2-1 ug/ml; ELISA Titer: 1:62500; Positive Control: HepG2 cell lysate



Host: Rabbit; Target Name: SRY; Sample Tissue: HepG2; Antibody Dilution: 1.0 ug/ml



Host: Rabbit; Target Name: SRY; Sample Tissue: 721\_B; Antibody Dilution: 1.0 ug/ml SRY is supported by BioGPS gene expression data to be expressed in 721\_B