

## Product datasheet for **TA338236**

### Tripeptidyl peptidase II (TPP2) Rabbit Polyclonal Antibody

#### Product data:

Product Type:	Primary Antibodies
Applications:	WB
Recommended Dilution:	WB
Reactivity:	Human
Host:	Rabbit
Isotype:	IgG
Clonality:	Polyclonal
Immunogen:	The immunogen for anti-TPP2 antibody is: synthetic peptide directed towards the N-terminal region of Human TPP2. Synthetic peptide located within the following region: GAPGMQVTTDGKPKIVDIIDTTGSGDVNTATEVEPKDGEIVGLSGRVLKI
Formulation:	Liquid. Purified antibody supplied in 1x PBS buffer with 0.09% (w/v) sodium azide and 2% sucrose. <i>Note that this product is shipped as lyophilized powder to China customers.</i>
Purification:	Affinity Purified
Conjugation:	Unconjugated
Storage:	Store at -20°C as received.
Stability:	Stable for 12 months from date of receipt.
Predicted Protein Size:	138 kDa
Gene Name:	tripeptidyl peptidase 2
Database Link:	<a href="#">NP_003282</a> <a href="#">Entrez Gene 7174 Human P29144</a>
Background:	This gene encodes a mammalian peptidase that, at neutral pH, removes tripeptides from the N terminus of longer peptides. The protein has a specialized function that is essential for some MHC class I antigen presentation. The protein is a high molecular mass serine exopeptidase; the amino acid sequence surrounding the serine residue at the active site is similar to the peptidases of the subtilisin class rather than the trypsin class.
Synonyms:	TPP-2

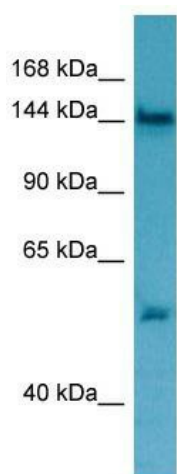


[View online »](#)

**Note:** Immunogen Sequence Homology: Pig: 100%; Rat: 100%; Human: 100%; Mouse: 100%; Rabbit: 100%; Guinea pig: 100%; Dog: 93%; Horse: 93%; Bovine: 93%

**Protein Families:** Druggable Genome, Protease

**Product images:**



WB Suggested Anti-TPP2 Antibody; Titration: 1.0 ug/ml; Positive Control: Jurkat Whole Cell TPP2 is strongly supported by BioGPS gene expression data to be expressed in Human Jurkat cells