

## Product datasheet for **TA338233**

### UQCRC2 Rabbit Polyclonal Antibody

#### Product data:

Product Type:	Primary Antibodies
Applications:	WB
Recommended Dilution:	WB
Reactivity:	Human
Host:	Rabbit
Isotype:	IgG
Clonality:	Polyclonal
Immunogen:	The immunogen for anti-UQCRC2 antibody is: synthetic peptide directed towards the C-terminal region of Human UQCRC2. Synthetic peptide located within the following region: GIYTISQATAAGDVIKAAAYNQVKTIAQGNSLNTDVSQAANKLKLKAGYLMSV
Formulation:	Liquid. Purified antibody supplied in 1x PBS buffer with 0.09% (w/v) sodium azide and 2% sucrose. <i>Note that this product is shipped as lyophilized powder to China customers.</i>
Purification:	Affinity Purified
Conjugation:	Unconjugated
Storage:	Store at -20°C as received.
Stability:	Stable for 12 months from date of receipt.
Predicted Protein Size:	47 kDa
Gene Name:	ubiquinol-cytochrome c reductase core protein II
Database Link:	<a href="#">NP_003357</a> <a href="#">Entrez Gene 7385 Human</a> <a href="#">P22695</a>
Background:	This is a component of the ubiquinol-cytochrome c reductase complex (complex III or cytochrome b-c1 complex), which is part of the mitochondrial respiratory chain. The core protein 2 is required for the assembly of the complex.
Synonyms:	MC3DN5; QCR2; UQCR2
Note:	Immunogen Sequence Homology: Pig: 100%; Human: 100%; Bovine: 93%; Rat: 86%; Goat: 86%; Horse: 86%; Mouse: 86%; Rabbit: 86%; Guinea pig: 86%

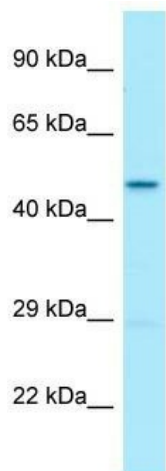


[View online »](#)

**Protein Families:** Druggable Genome, Protease

**Protein Pathways:** Alzheimer's disease, Cardiac muscle contraction, Huntington's disease, Metabolic pathways, Oxidative phosphorylation, Parkinson's disease

**Product images:**



WB Suggested Anti-UQCRC2 Antibody; Titration: 1.0 ug/ml; Positive Control: Fetal Lung