

Product datasheet for **TA338231**

OGR1 (GPR68) Rabbit Polyclonal Antibody

Product data:

Product Type:	Primary Antibodies
Applications:	WB
Recommended Dilution:	WB
Reactivity:	Human
Host:	Rabbit
Isotype:	IgG
Clonality:	Polyclonal
Immunogen:	The immunogen for anti-GPR68 antibody is: synthetic peptide directed towards the middle region of Human GPR68. Synthetic peptide located within the following region: SIYFLMHEEVIEDENQHRVCFEHYPIQAWQRAINYYRFLVGFLFPICLLL
Formulation:	Liquid. Purified antibody supplied in 1x PBS buffer with 0.09% (w/v) sodium azide and 2% sucrose. <i>Note that this product is shipped as lyophilized powder to China customers.</i>
Purification:	Affinity Purified
Conjugation:	Unconjugated
Storage:	Store at -20°C as received.
Stability:	Stable for 12 months from date of receipt.
Predicted Protein Size:	41 kDa
Gene Name:	G protein-coupled receptor 68
Database Link:	NP_003476 Entrez Gene 8111 Human Q15743
Background:	Proton-sensing receptor is involved in pH homeostasis. GPR68 may represent an osteoblastic pH sensor regulating cell-mediated responses to acidosis in bone. GPR68 mediates its action by association with G proteins that stimulates inositol phosphate (IP) production or Ca ²⁺ mobilization. The receptor is almost silent at pH 7.8 but fully activated at pH 6.8. Function also as a metastasis suppressor gene in prostate cancer.
Synonyms:	GPR12A; OGR1

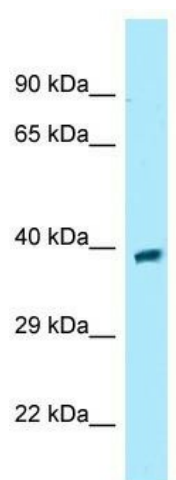


[View online »](#)

Note: Immunogen Sequence Homology: Human: 100%; Horse: 93%; Mouse: 93%; Rat: 86%; Dog: 79%; Pig: 79%; Rabbit: 79%

Protein Families: Druggable Genome, GPCR, Transmembrane

Product images:



WB Suggested Anti-GPR68 Antibody; Titration: 1.0 ug/ml; Positive Control: Fetal Brain