

## Product datasheet for TA338230

### OGR1 (GPR68) Rabbit Polyclonal Antibody

#### Product data:

Product Type:	Primary Antibodies
Applications:	WB
Recommended Dilution:	WB
Reactivity:	Human, Mouse
Host:	Rabbit
Isotype:	IgG
Clonality:	Polyclonal
Immunogen:	The immunogen for anti-GPR68 antibody is: synthetic peptide directed towards the C-terminal region of Human GPR68. Synthetic peptide located within the following region: GILRAVRRSHGTQSRKDQIQLVLTWVIFLACFLPYHVLVRSVWEA
Formulation:	Liquid. Purified antibody supplied in 1x PBS buffer with 0.09% (w/v) sodium azide and 2% sucrose. <i>Note that this product is shipped as lyophilized powder to China customers.</i>
Purification:	Affinity Purified
Conjugation:	Unconjugated
Storage:	Store at -20°C as received.
Stability:	Stable for 12 months from date of receipt.
Predicted Protein Size:	38 kDa
Gene Name:	G protein-coupled receptor 68
Database Link:	<a href="#">NP_003476</a> <a href="#">Entrez Gene 238377 Mouse</a> <a href="#">Entrez Gene 8111 Human</a> <a href="#">Q15743</a>
Background:	Proton-sensing receptor is involved in pH homeostasis. GPR68 may represent an osteoblastic pH sensor regulating cell-mediated responses to acidosis in bone. GPR68 mediates its action by association with G proteins that stimulates inositol phosphate (IP) production or Ca <sup>2+</sup> mobilization. The receptor is almost silent at pH 7.8 but fully activated at pH 6.8. Function also as a metastasis suppressor gene in prostate cancer.
Synonyms:	GPR12A; OGR1

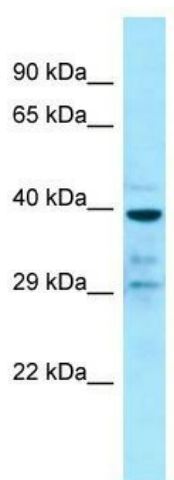


[View online »](#)

**Note:** Immunogen Sequence Homology: Dog: 100%; Pig: 100%; Rat: 100%; Horse: 100%; Human: 100%; Mouse: 100%; Bovine: 100%; Rabbit: 100%; Guinea pig: 100%

**Protein Families:** Druggable Genome, GPCR, Transmembrane

**Product images:**



Host: Rabbit; Target Name: GPR68; Sample Tissue: U937 Whole Cell lysates; Antibody Dilution: 1.0 ug/ml