

## Product datasheet for **TA338229**

### BFSP2 Rabbit Polyclonal Antibody

#### Product data:

Product Type:	Primary Antibodies
Applications:	WB
Recommended Dilution:	WB
Reactivity:	Human
Host:	Rabbit
Isotype:	IgG
Clonality:	Polyclonal
Immunogen:	The immunogen for anti-BFSP2 antibody is: synthetic peptide directed towards the middle region of Human BFSP2. Synthetic peptide located within the following region: CQQVGEAVLENARLMLQTETIQAGADDFKERYENEQPFRKAAEEEEINSLY
Formulation:	Liquid. Purified antibody supplied in 1x PBS buffer with 0.09% (w/v) sodium azide and 2% sucrose. <i>Note that this product is shipped as lyophilized powder to China customers.</i>
Purification:	Affinity Purified
Conjugation:	Unconjugated
Storage:	Store at -20°C as received.
Stability:	Stable for 12 months from date of receipt.
Predicted Protein Size:	46 kDa
Gene Name:	beaded filament structural protein 2
Database Link:	<a href="#">NP_003562</a> <a href="#">Entrez Gene 8419 Human</a> <a href="#">Q13515</a>
Background:	More than 99% of the vertebrate ocular lens is comprised of terminally differentiated lens fiber cells. Two lens-specific intermediate filament-like proteins, the protein product of this gene (phakinin), and filensin, are expressed only after fiber cell differentiation has begun. Both proteins are found in a structurally unique cytoskeletal element that is referred to as the beaded filament (BF). Mutations in this gene have been associated with juvenile-onset, progressive cataracts and Dowling-Meara epidermolysis bullosa simplex.

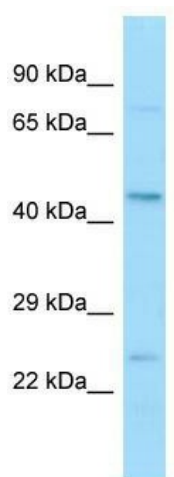


[View online »](#)

**Synonyms:** CP47; CP49; CTRCT12; LIFL-L; PHAKOSIN

**Note:** Immunogen Sequence Homology: Dog: 100%; Pig: 100%; Rat: 100%; Horse: 100%; Human: 100%; Mouse: 100%; Bovine: 100%; Rabbit: 100%; Guinea pig: 100%; Zebrafish: 86%

**Product images:**



WB Suggested Anti-BFSP2 Antibody; Titration: 1.0 ug/ml; Positive Control: 293T Whole Cell