

Product datasheet for **TA338228**

Semaphorin 7a (SEMA7A) Rabbit Polyclonal Antibody

Product data:

Product Type:	Primary Antibodies
Applications:	WB
Recommended Dilution:	WB
Reactivity:	Human
Host:	Rabbit
Isotype:	IgG
Clonality:	Polyclonal
Immunogen:	The immunogen for anti-SEMA7A antibody is: synthetic peptide directed towards the C-terminal region of Human SEMA7A. Synthetic peptide located within the following region: SIYSSERSVLQSINPAEPHKECPNPKPDKAPLQKVSLAPNSRYLSCPME
Formulation:	Liquid. Purified antibody supplied in 1x PBS buffer with 0.09% (w/v) sodium azide and 2% sucrose.
Purification:	Affinity Purified
Conjugation:	Unconjugated
Storage:	Store at -20°C as received.
Stability:	Stable for 12 months from date of receipt.
Predicted Protein Size:	68 kDa
Gene Name:	semaphorin 7A (John Milton Hagen blood group)
Database Link:	NP_003603 Entrez Gene 8482 Human O75326
Background:	The protein encoded by this gene binds to cell surfaces through a glycosylphosphatidylinositol (GPI) linkage. The encoded glycoprotein is found on activated lymphocytes and erythrocytes. This protein may be involved in immunomodulatory and neuronal processes. Defects in this gene can result in loss of bone mineral density (BMD). Three transcript variants encoding different isoforms have been found for this gene.
Synonyms:	CD108; CDw108; H-SEMA-K1; H-Sema-L; JMH; SEMAK1; SEMAL


[View online »](#)

Note: Immunogen Sequence Homology: Dog: 100%; Human: 100%; Pig: 93%; Rat: 93%; Horse: 93%; Guinea pig: 93%; Mouse: 92%; Bovine: 79%

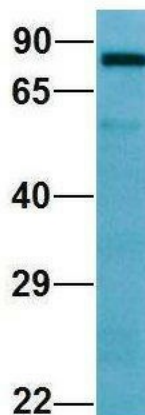
Protein Pathways: Axon guidance

Product images:



WB Suggested Anti-SEMA7A Antibody; Titration: 1.0 ug/ml; Positive Control: MDA-MB-435S Whole Cell SEMA7A is supported by BioGPS gene expression data to be expressed in MDA-MB435

SEMA7A



Rabbit Anti-SEMA7A
Sample Type: Human 721_B
Antibody Concentration: 1ug/mL

Host: Rabbit; Target Name: SEMA7A; Sample Tissue: 721_B; Antibody Dilution: 1.0 ug/ml SEMA7A is supported by BioGPS gene expression data to be expressed in 721_B