

## Product datasheet for **TA338225**

### ITGA8 Rabbit Polyclonal Antibody

#### Product data:

Product Type:	Primary Antibodies
Applications:	WB
Recommended Dilution:	WB
Reactivity:	Human
Host:	Rabbit
Isotype:	IgG
Clonality:	Polyclonal
Immunogen:	The immunogen for anti-ITGA8 antibody: synthetic peptide directed towards the N terminal of human ITGA8. Synthetic peptide located within the following region: GEKQTEVAPASYDDSYLGYSVAAGEFTGDSQQELVAGIPRGAQNFGYVSI
Formulation:	Liquid. Purified antibody supplied in 1x PBS buffer with 0.09% (w/v) sodium azide and 2% sucrose. <i>Note that this product is shipped as lyophilized powder to China customers.</i>
Purification:	Affinity Purified
Conjugation:	Unconjugated
Storage:	Store at -20°C as received.
Stability:	Stable for 12 months from date of receipt.
Predicted Protein Size:	117 kDa
Gene Name:	integrin subunit alpha 8
Database Link:	<a href="#">NP_003629</a> <a href="#">Entrez Gene 8516 Human P53708</a>



[View online »](#)

**Background:**

Integrins are heterodimeric transmembrane receptor proteins that mediate numerous cellular processes including cell adhesion, cytoskeletal rearrangement, and activation of cell signaling pathways. Integrins are composed of alpha and beta subunits. This gene encodes the alpha 8 subunit of the heterodimeric integrin alpha8beta1 protein. The encoded protein is a single-pass type 1 membrane protein that contains multiple FG-GAP repeats. This repeat is predicted to fold into a beta propeller structure. This gene regulates the recruitment of mesenchymal cells into epithelial structures, mediates cell-cell interactions, and regulates neurite outgrowth of sensory and motor neurons. The integrin alpha8beta1 protein thus plays an important role in wound-healing and organogenesis. Mutations in this gene have been associated with renal hypodysplasia/aplasia-1 (RHDA1) and with several animal models of chronic kidney disease. Alternate splicing results in multiple transcript variants encoding distinct isoforms. [provided by RefSeq, Apr 2014]

**Synonyms:**

alpha 8; integrin; OTTHUMP00000019207

**Note:**

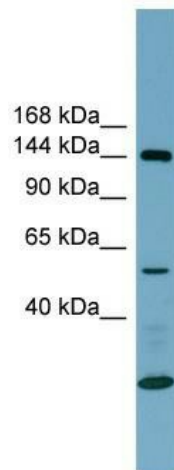
Immunogen Sequence Homology: Rat: 100%; Human: 100%; Mouse: 100%; Horse: 93%; Bovine: 93%; Rabbit: 93%; Pig: 91%; Guinea pig: 91%; Dog: 86%; Zebrafish: 79%

**Protein Families:**

Druggable Genome, Transmembrane

**Protein Pathways:**

Arrhythmogenic right ventricular cardiomyopathy (ARVC), Cell adhesion molecules (CAMs), Dilated cardiomyopathy, ECM-receptor interaction, Focal adhesion, Hypertrophic cardiomyopathy (HCM), Regulation of actin cytoskeleton

**Product images:**

WB Suggested Anti-ITGA8 Antibody Titration: 0.2-1 ug/ml; Positive Control: Human Spleen