

Product datasheet for **TA338223**

DGKD Rabbit Polyclonal Antibody

Product data:

| | |
|-------------------------|---|
| Product Type: | Primary Antibodies |
| Applications: | WB |
| Recommended Dilution: | WB |
| Reactivity: | Human |
| Host: | Rabbit |
| Isotype: | IgG |
| Clonality: | Polyclonal |
| Immunogen: | The immunogen for anti-DGKD antibody is: synthetic peptide directed towards the C-terminal region of Human DGKD. Synthetic peptide located within the following region: KRSRSGKFRLVTKFKKEKNNKNKEAHSSLGAPVHLWGTEEVAAWLEHLSL |
| Formulation: | Liquid. Purified antibody supplied in 1x PBS buffer with 0.09% (w/v) sodium azide and 2% sucrose. <i>Note that this product is shipped as lyophilized powder to China customers.</i> |
| Purification: | Affinity Purified |
| Conjugation: | Unconjugated |
| Storage: | Store at -20°C as received. |
| Stability: | Stable for 12 months from date of receipt. |
| Predicted Protein Size: | 130 kDa |
| Gene Name: | diacylglycerol kinase delta |
| Database Link: | NP_003639 Entrez Gene 8527 Human Q16760 |
| Background: | This gene encodes a cytoplasmic enzyme that phosphorylates diacylglycerol to produce phosphatidic acid. Diacylglycerol and phosphatidic acid are two lipids that act as second messengers in signaling cascades. Their cellular concentrations are regulated by the encoded protein, and so it is thought to play an important role in cellular signal transduction. Alternative splicing results in two transcript variants encoding different isoforms. |
| Synonyms: | dgkd-2; DGKdelta |



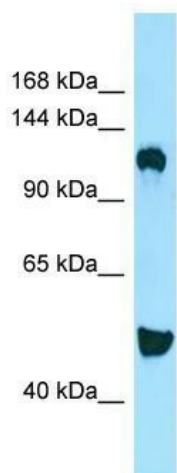
[View online »](#)

Note: Immunogen Sequence Homology: Rat: 100%; Human: 100%; Pig: 93%; Guinea pig: 93%; Mouse: 92%; Rabbit: 86%; Dog: 79%

Protein Families: Druggable Genome

Protein Pathways: Glycerolipid metabolism, Glycerophospholipid metabolism, Metabolic pathways, Phosphatidylinositol signaling system

Product images:



WB Suggested Anti-DGKD Antibody; Titration: 1.0 ug/ml; Positive Control: RPMI-8226 Whole Cell