

Product datasheet for TA338222

Carbohydrate sulfotransferase 1 (CHST1) Rabbit Polyclonal Antibody

Product data:

Product Type:	Primary Antibodies
Applications:	WB
Recommended Dilution:	WB
Reactivity:	Human
Host:	Rabbit
Isotype:	IgG
Clonality:	Polyclonal
Immunogen:	The immunogen for anti-CHST1 antibody: synthetic peptide directed towards the middle region of human CHST1. Synthetic peptide located within the following region: YRLWRLWYGTGRKPYNLDVTQLTTVCEDFSNSVSTGLMRPPWLKGYMLV
Formulation:	Liquid. Purified antibody supplied in 1x PBS buffer with 0.09% (w/v) sodium azide and 2% sucrose. <i>Note that this product is shipped as lyophilized powder to China customers.</i>
Purification:	Affinity Purified
Conjugation:	Unconjugated
Storage:	Store at -20°C as received.
Stability:	Stable for 12 months from date of receipt.
Predicted Protein Size:	47 kDa
Gene Name:	carbohydrate sulfotransferase 1
Database Link:	NP_003645 Entrez Gene 8534 Human O43916
Background:	This locus encodes a member of the keratin sulfotransferase family of proteins. The encoded enzyme catalyzes the sulfation of the proteoglycan keratin. [provided by RefSeq, Aug 2011]
Synonyms:	C6ST; GST-1; KS6ST; KSGal6ST; KSST
Note:	Immunogen Sequence Homology: Dog: 100%; Pig: 100%; Rat: 100%; Human: 100%; Mouse: 100%; Bovine: 100%; Guinea pig: 100%; Rabbit: 93%; Zebrafish: 92%

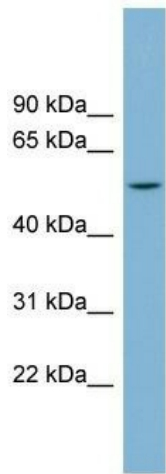


[View online »](#)

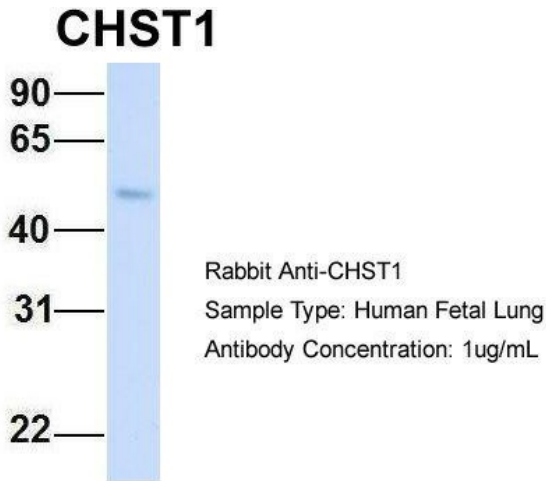
Protein Families: Transmembrane

Protein Pathways: Keratan sulfate biosynthesis, Metabolic pathways

Product images:



WB Suggested Anti-CHST1 Antibody Titration: 0.2-1 ug/ml; Positive Control: Human kidney



Host: Rabbit; Target Name: CHST1; Sample Tissue: Human Fetal Lung; Antibody Dilution: 1.0 ug/ml

