

## Product datasheet for **TA338221**

### Carbohydrate sulfotransferase 1 (CHST1) Rabbit Polyclonal Antibody

#### Product data:

|                         |   |
|-------------------------|---|
| Product Type:           | Primary Antibodies  |
| Applications:           | IHC, WB   |
| Recommended Dilution:   | WB, IHC   |
| Reactivity:             | Human   |
| Host:                   | Rabbit  |
| Isotype:                | IgG   |
| Clonality:              | Polyclonal  |
| Immunogen:              | The immunogen for anti-CHST1 antibody: synthetic peptide directed towards the N terminal of human CHST1. Synthetic peptide located within the following region: SFVGQLFNQHLDVLYLFEPLYHVQNTLIPRFTQGKSPADRRVMLGASRD |
| Formulation:            | Liquid. Purified antibody supplied in 1x PBS buffer with 0.09% (w/v) sodium azide and 2% sucrose.<br><i>Note that this product is shipped as lyophilized powder to China customers.</i>                           |
| Purification:           | Protein A purified  |
| Conjugation:            | Unconjugated  |
| Storage:                | Store at -20°C as received.   |
| Stability:              | Stable for 12 months from date of receipt.  |
| Predicted Protein Size: | 47 kDa  |
| Gene Name:              | carbohydrate sulfotransferase 1   |
| Database Link:          | <a href="#">NP_003645</a><br><a href="#">Entrez Gene 8534 Human</a><br><a href="#">O43916</a>   |
| Background:             | This locus encodes a member of the keratin sulfotransferase family of proteins. The encoded enzyme catalyzes the sulfation of the proteoglycan keratin. [provided by RefSeq, Aug 2011]                            |
| Synonyms:               | C6ST; GST-1; KS6ST; KSGal6ST; KSST  |
| Note:                   | Immunogen Sequence Homology: Dog: 100%; Pig: 100%; Rat: 100%; Human: 100%; Mouse: 100%; Bovine: 100%; Guinea pig: 100%; Rabbit: 93%   |

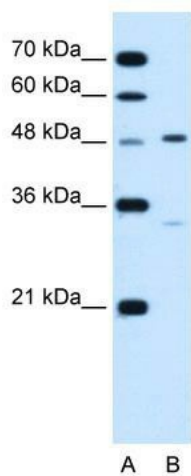


[View online »](#)

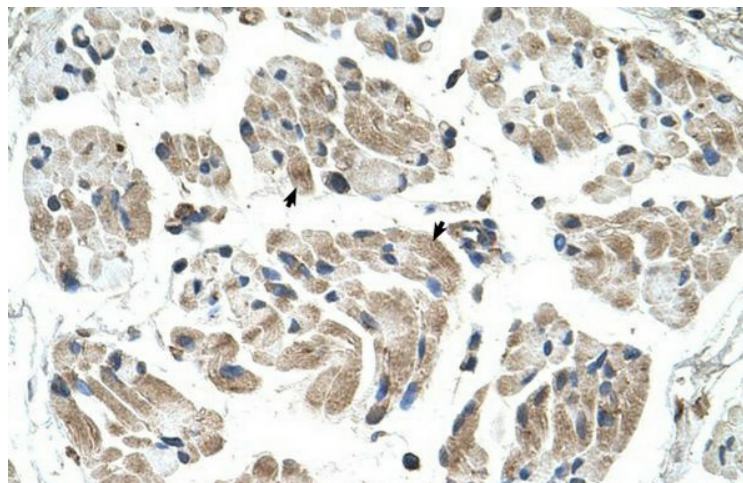
Protein Families: Transmembrane

Protein Pathways: Keratan sulfate biosynthesis, Metabolic pathways

### Product images:



WB Suggested Anti-CHST1 Antibody Titration:  
1.25 ug/ml; Positive Control: Jurkat cell lysate



Human Muscle