

Product datasheet for **TA338220**

NABC1 (BCAS1) Rabbit Polyclonal Antibody

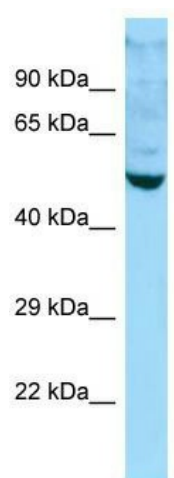
Product data:

Product Type:	Primary Antibodies
Applications:	WB
Recommended Dilution:	WB
Reactivity:	Human
Host:	Rabbit
Isotype:	IgG
Clonality:	Polyclonal
Immunogen:	The immunogen for anti-BCAS1 antibody is: synthetic peptide directed towards the C-terminal region of Human BCAS1. Synthetic peptide located within the following region: KSVKEDSVPTGAEENTSDSTEKTITPPEPEPTGAPQKGKEGSSKDKKSAA
Formulation:	Liquid. Purified antibody supplied in 1x PBS buffer with 0.09% (w/v) sodium azide and 2% sucrose. <i>Note that this product is shipped as lyophilized powder to China customers.</i>
Purification:	Affinity Purified
Conjugation:	Unconjugated
Storage:	Store at -20°C as received.
Stability:	Stable for 12 months from date of receipt.
Predicted Protein Size:	55 kDa
Gene Name:	breast carcinoma amplified sequence 1
Database Link:	NP_003648 Entrez Gene 8537 Human O75363
Background:	The function of this protein remains unknown.
Synonyms:	AIBC1; NABC1
Note:	Immunogen Sequence Homology: Dog: 100%; Human: 100%; Rabbit: 100%; Rat: 92%; Horse: 92%; Bovine: 92%; Pig: 91%; Guinea pig: 91%



[View online »](#)

Product images:



Host: Rabbit; Target Name: BCAS1; Sample Tissue: HepG2 Whole Cell lysates; Antibody Dilution: 1.0 ug/ml