

## Product datasheet for **TA338219**

### DEGS1 Rabbit Polyclonal Antibody

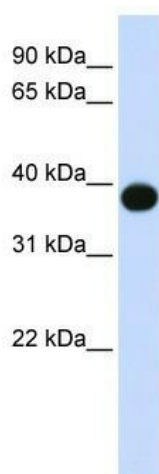
#### Product data:

Product Type:	Primary Antibodies
Applications:	IHC, WB
Recommended Dilution:	WB, IHC
Reactivity:	Human
Host:	Rabbit
Isotype:	IgG
Clonality:	Polyclonal
Immunogen:	The immunogen for anti-DEGS1 antibody: synthetic peptide directed towards the N terminal of human DEGS1. Synthetic peptide located within the following region: GSRVSREDFEWVYTDQPHADRRREILAKYPEIKSLMKPDPNLIWIIIMMV
Formulation:	Liquid. Purified antibody supplied in 1x PBS buffer with 0.09% (w/v) sodium azide and 2% sucrose. <i>Note that this product is shipped as lyophilized powder to China customers.</i>
Purification:	Affinity Purified
Conjugation:	Unconjugated
Storage:	Store at -20°C as received.
Stability:	Stable for 12 months from date of receipt.
Predicted Protein Size:	38 kDa
Gene Name:	delta(4)-desaturase, sphingolipid 1
Database Link:	<a href="#">NP_003667</a> <a href="#">Entrez Gene 8560 Human</a> <a href="#">O15121</a>

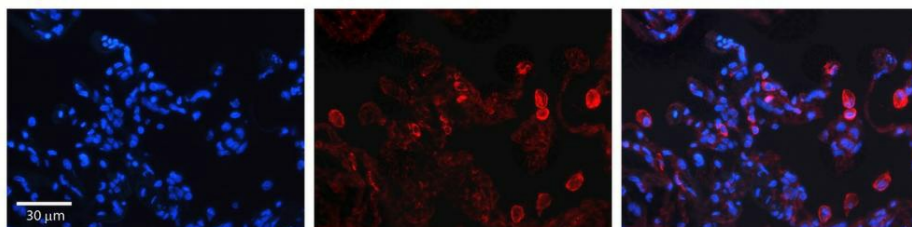


[View online »](#)

<b>Background:</b>	This gene encodes a member of the membrane fatty acid desaturase family which is responsible for inserting double bonds into specific positions in fatty acids. This protein contains three His-containing consensus motifs that are characteristic of a group of membrane fatty acid desaturases. It is predicted to be a multiple membrane-spanning protein localized to the endoplasmic reticulum. Overexpression of this gene inhibited biosynthesis of the EGF receptor, suggesting a possible role of a fatty acid desaturase in regulating biosynthetic processing of the EGF receptor. [provided by RefSeq, Mar 2010]
<b>Synonyms:</b>	DEGS; DEGS-1; Des-1; DES1; FADS7; MIG15; MLD
<b>Note:</b>	Immunogen Sequence Homology: Pig: 100%; Rat: 100%; Horse: 100%; Human: 100%; Mouse: 100%; Bovine: 100%; Guinea pig: 100%; Sheep: 93%; Rabbit: 93%; Zebrafish: 93%; Goat: 86%
<b>Protein Families:</b>	Druggable Genome, Transmembrane
<b>Protein Pathways:</b>	Metabolic pathways, Sphingolipid metabolism

**Product images:**

WB Suggested Anti-DEGS1 Antibody Titration: 0.2-1 ug/ml; ELISA Titer: 1: 312500; Positive Control: Human Muscle



Human Lung Tissue