

Product datasheet for **TA338218**

TMEFF1 Rabbit Polyclonal Antibody

Product data:

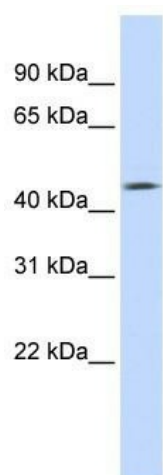
| | |
|-------------------------|--|
| Product Type: | Primary Antibodies |
| Applications: | WB |
| Recommended Dilution: | WB |
| Reactivity: | Human |
| Host: | Rabbit |
| Isotype: | IgG |
| Clonality: | Polyclonal |
| Immunogen: | The immunogen for anti-TMEFF1 antibody: synthetic peptide directed towards the middle region of human TMEFF1. Synthetic peptide located within the following region: YSDNGSGSGEGEEEEGSGAEVHRKHSKCGPCKYKAECDEDAENVGCVCNID |
| Formulation: | Liquid. Purified antibody supplied in 1x PBS buffer with 0.09% (w/v) sodium azide and 2% sucrose. <i>Note that this product is shipped as lyophilized powder to China customers.</i> |
| Purification: | Affinity Purified |
| Conjugation: | Unconjugated |
| Storage: | Store at -20°C as received. |
| Stability: | Stable for 12 months from date of receipt. |
| Predicted Protein Size: | 41 kDa |
| Gene Name: | transmembrane protein with EGF like and two follistatin like domains 1 |
| Database Link: | NP_003683 Entrez Gene 8577 Human Q8IYR6 |
| Background: | TMEFF1 may inhibit NODAL and BMP signaling during neural patterning. It may be a tumor suppressor in brain cancers. |
| Synonyms: | C9orf2; CT120.1; H7365; TR-1 |
| Note: | Immunogen Sequence Homology: Dog: 100%; Pig: 100%; Rat: 100%; Horse: 100%; Human: 100%; Mouse: 100%; Rabbit: 100%; Guinea pig: 100%; Bovine: 93% |



[View online »](#)

Protein Families: Transmembrane

Product images:



WB Suggested Anti-TMEFF1 Antibody Titration:
0.2-1 ug/ml; ELISA Titer: 1: 12500; Positive
Control: Human heart