

Product datasheet for **TA338217**

Vesicle docking protein p115 (USO1) Rabbit Polyclonal Antibody

Product data:

Product Type:	Primary Antibodies
Applications:	WB
Recommended Dilution:	WB
Reactivity:	Human
Host:	Rabbit
Isotype:	IgG
Clonality:	Polyclonal
Immunogen:	The immunogen for anti-USO1 antibody is: synthetic peptide directed towards the N-terminal region of Human USO1. Synthetic peptide located within the following region: QTDRSDSEIIGYALDILYNIISNEEEEEVEENSTRQSEDLGSQFTEIFIK
Formulation:	Liquid. Purified antibody supplied in 1x PBS buffer with 0.09% (w/v) sodium azide and 2% sucrose. <i>Note that this product is shipped as lyophilized powder to China customers.</i>
Purification:	Affinity Purified
Conjugation:	Unconjugated
Storage:	Store at -20°C as received.
Stability:	Stable for 12 months from date of receipt.
Predicted Protein Size:	108 kDa
Gene Name:	USO1 vesicle transport factor
Database Link:	NP_003706 Entrez Gene 8615 Human O60763



[View online »](#)

Background:

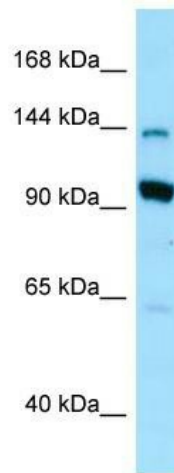
The protein encoded by this gene is a peripheral membrane protein which recycles between the cytosol and the Golgi apparatus during interphase. It is regulated by phosphorylation: dephosphorylated protein associates with the Golgi membrane and dissociates from the membrane upon phosphorylation. Ras-associated protein 1 recruits this protein to coat protein complex II (COPII) vesicles during budding from the endoplasmic reticulum, where it interacts with a set of COPII vesicle-associated SNAREs to form a cis-SNARE complex that promotes targeting to the Golgi apparatus. Transport from the ER to the cis/medial Golgi compartments requires the action of this gene product, GM130 and giantin in a sequential manner.

Synonyms:

P115; TAP; VDP

Note:

Immunogen Sequence Homology: Dog: 100%; Pig: 100%; Rat: 100%; Horse: 100%; Human: 100%; Bovine: 100%; Mouse: 93%; Guinea pig: 93%; Rabbit: 86%

Product images:

WB Suggested Anti-USO1 Antibody; Titration: 1.0 ug/ml; Positive Control: 293T Whole Cell USO1 is strongly supported by BioGPS gene expression data to be expressed in Human HEK293T cells