

## Product datasheet for **TA338212**

### ALDH4A1 Rabbit Polyclonal Antibody

#### Product data:

Product Type:	Primary Antibodies
Applications:	IHC, WB
Recommended Dilution:	WB, IHC
Reactivity:	Human
Host:	Rabbit
Isotype:	IgG
Clonality:	Polyclonal
Immunogen:	The immunogen for anti-ALDH4A1 antibody: synthetic peptide directed towards the C terminal of human ALDH4A1. Synthetic peptide located within the following region: RNAAGNFYINDKSTGSIVGQQPFGGARASGTNDKPGGPHYILRWTSQVI
Formulation:	Liquid. Purified antibody supplied in 1x PBS buffer with 0.09% (w/v) sodium azide and 2% sucrose. <i>Note that this product is shipped as lyophilized powder to China customers.</i>
Purification:	Protein A purified
Conjugation:	Unconjugated
Storage:	Store at -20°C as received.
Stability:	Stable for 12 months from date of receipt.
Predicted Protein Size:	62 kDa
Gene Name:	aldehyde dehydrogenase 4 family member A1
Database Link:	<a href="#">NP_003739</a> <a href="#">Entrez Gene 8659 Human P30038</a>

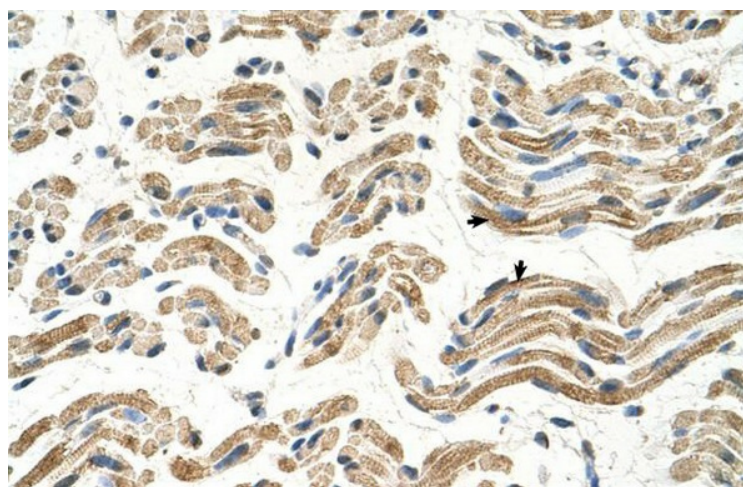


[View online »](#)

<b>Background:</b>	This protein belongs to the aldehyde dehydrogenase family of proteins. This enzyme is a mitochondrial matrix NAD-dependent dehydrogenase which catalyzes the second step of the proline degradation pathway, converting pyrroline-5-carboxylate to glutamate. Deficiency of this enzyme is associated with type II hyperprolinemia, an autosomal recessive disorder characterized by accumulation of delta-1-pyrroline-5-carboxylate (P5C) and proline. Alternatively spliced transcript variants encoding different isoforms have been identified for this gene. [provided by RefSeq, Jun 2009]
<b>Synonyms:</b>	ALDH4; P5CD; P5CDh
<b>Note:</b>	Immunogen Sequence Homology: Dog: 100%; Pig: 100%; Rat: 100%; Horse: 100%; Human: 100%; Mouse: 100%; Bovine: 100%; Rabbit: 100%; Zebrafish: 100%
<b>Protein Families:</b>	Druggable Genome
<b>Protein Pathways:</b>	Alanine, aspartate and glutamate metabolism, Arginine and proline metabolism, Metabolic pathways

**Product images:**

WB Suggested Anti-ALDH4A1 Antibody Titration: 1.25 ug/ml; Positive Control: Fetal liver cell lysate



Human Muscle