

## Product datasheet for **TA338204**

### SUCLG1 Rabbit Polyclonal Antibody

#### Product data:

Product Type:	Primary Antibodies
Applications:	WB
Recommended Dilution:	WB
Reactivity:	Human
Host:	Rabbit
Isotype:	IgG
Clonality:	Polyclonal
Immunogen:	The immunogen for anti-SUCLG1 antibody is: synthetic peptide directed towards the C-terminal region of Human SUCLG1. Synthetic peptide located within the following region: MGHAGAIAGGKGGAKEKISALQSAGVVVSMSPAQLGTTIYKEFEKRKML
Formulation:	Liquid. Purified antibody supplied in 1x PBS buffer with 0.09% (w/v) sodium azide and 2% sucrose. <i>Note that this product is shipped as lyophilized powder to China customers.</i>
Purification:	Affinity Purified
Conjugation:	Unconjugated
Storage:	Store at -20°C as received.
Stability:	Stable for 12 months from date of receipt.
Predicted Protein Size:	33 kDa
Gene Name:	succinate-CoA ligase alpha subunit
Database Link:	<a href="#">NP_003840</a> <a href="#">Entrez Gene 8802 Human</a> <a href="#">P53597</a>
Background:	This gene encodes the alpha subunit of the heterodimeric enzyme succinate coenzyme A ligase. This enzyme is targeted to the mitochondria and catalyzes the conversion of succinyl CoA and ADP or GDP to succinate and ATP or GTP. Mutations in this gene are the cause of the metabolic disorder fatal infantile lactic acidosis and mitochondrial DNA depletion.
Synonyms:	GALPHA; MTDPS9; SUCLA1

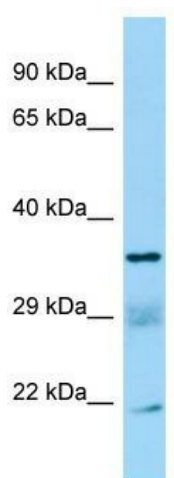


[View online »](#)

**Note:** Immunogen Sequence Homology: Dog: 100%; Rat: 100%; Horse: 100%; Human: 100%; Mouse: 100%; Rabbit: 100%; Pig: 93%; Bovine: 93%; Zebrafish: 93%; Guinea pig: 93%; Yeast: 86%

**Protein Pathways:** Citrate cycle (TCA cycle), Metabolic pathways, Propanoate metabolism

**Product images:**



WB Suggested Anti-SUCLG1 Antibody; Titration: 1.0 ug/ml; Positive Control: U937 Whole Cell