

Product datasheet for **TA338200**

SGPL1 Rabbit Polyclonal Antibody

Product data:

Product Type:	Primary Antibodies
Applications:	WB
Recommended Dilution:	WB
Reactivity:	Human
Host:	Rabbit
Isotype:	IgG
Clonality:	Polyclonal
Immunogen:	The immunogen for anti-SGPL1 antibody is: synthetic peptide directed towards the C-terminal region of Human SGPL1. Synthetic peptide located within the following region: IHFCITLLHARKRVAIQFLKDIRE SVTQIMKNPKAKTTGMGAIYGMAQTT
Formulation:	Liquid. Purified antibody supplied in 1x PBS buffer with 0.09% (w/v) sodium azide and 2% sucrose. <i>Note that this product is shipped as lyophilized powder to China customers.</i>
Purification:	Affinity Purified
Conjugation:	Unconjugated
Storage:	Store at -20°C as received.
Stability:	Stable for 12 months from date of receipt.
Predicted Protein Size:	63 kDa
Gene Name:	sphingosine-1-phosphate lyase 1
Database Link:	NP_003892 Entrez Gene 8879 Human O95470
Background:	SGPL1 cleaves phosphorylated sphingoid bases (PSBs), such as sphingosine-1-phosphate, into fatty aldehydes and phosphoethanolamine. SGPL1 elevates stress-induced ceramide production and apoptosis.
Synonyms:	S1PL; SPL
Note:	Immunogen Sequence Homology: Dog: 100%; Pig: 100%; Rat: 100%; Horse: 100%; Human: 100%; Mouse: 100%; Bovine: 100%; Rabbit: 100%; Goat: 93%; Zebrafish: 91%; Guinea pig: 86%

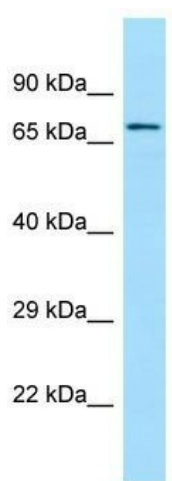


[View online »](#)

Protein Families: Druggable Genome

Protein Pathways: Metabolic pathways, Sphingolipid metabolism

Product images:



WB Suggested Anti-SGPL1 Antibody; Titration: 1.0 ug/ml; Positive Control: 721_B Whole Cell. There is BioGPS gene expression data showing that SGPL1 is expressed in 721_B